

TULCEA MUNICIPALITY CITY HALL

**LOCAL AGENDA 21 –
LOCAL PLAN FOR SUSTAINABLE
DEVELOPMENT FOR THE MUNICIPALITY OF
TULCEA**

**TULCEA
2007**

UNDP Project 0033238

Copyright © 2007 Tulcea City Hall, Romania
20 Păcii Str, Tulcea, 820033, Tulcea
Tel.: +40 240 511 440
Fax: +40 240 517 736
E-mail: primtl@tim.ro
www.primaria-tulcea.ro

Copyright © 2007 National Centre for Sustainable Development
16 Dr. Burghelea, Sector 2, Bucharest
Tel: +40 21 310 33 20
Fax: +40 21 310 33 21
E-Mail: office@ncsd.ro
<http://www.ncsd.ro>

Copyright © 2007 Ministry of Development, Public Works and Housing
Authority of Management for Regional Operational Programme
no. 17, Apolodor St., North Building, Sector 5, Bucharest, 050741 - RO,
Tel: +40 (37) 211 1409,
Fax: +40 (37) 2111630
E-Mail: info@mdlpl.ro
<http://www.mdlpl.ro> , www.inforegio.ro

This document was published with the help of the Ministry of Development, Public Works and Housing, and with the help of the United Nations Development Programme, based upon the Memorandum of Understanding between the Ministry of European Integration and United Nations Development Programme regarding the co-finance and implementation of the project "Extended implementation of the Local Agenda 21 in Romania", signed in Bucharest, on May 12, 2006, approved by Government Decision no. 898/2006, issued in Romanian Official Gazette, Part I, no. 659 of July 31, 2006.

The views expressed here belong to the authors and do not necessarily reflect the views of the MDPWH/UNDP.

Technical expertise was provided by the National Centre for Sustainable Development.

LOCAL STEERING COMMITTEE

Dr. Constantin Hoge, Eng., President of the Local Steering Committee, Tulcea Municipality City Hall (TMCH)

Andrian Ampleev, Primary Counsellor, TMCH

Iusuf Levent, jr, Director of the Local Public Administration Department, TMCH

Cadir Bectas, Director of the Tulcea Environmental Agency

Prascovia Andreev, Architect, Urban Studies Department, TMCH

Rodica Chesca, Eng., Investment Department, TMCH

Mihai Stroe, General Inspector, County School Inspectorate, Tulcea

Ion Antoche, Chief Commissary, Tulcea Municipality Police

Vasile Martin, Director of Community Police, TMCH

Ilie Maria Aurora, Jr., Prefect Office, Tulcea County

Anicuta Voinea, Director of the Tulcea Chamber of Industry and Commerce

Iuliana Lefter, Director of the County Employment Agency, Tulcea

Aurica Mihalcea, Director of the County Labour, Social, and Family Department, Tulcea

Cezar Jipa, Counsellor –Tulcea Local Council, Representative of local SMEs

Andrei Luchici, Prefect's Department, representative of local NGOs

Costel Constantinescu, Editor of "Cotidianul Obiectiv", Tulcea

LOCAL AGENDA 21 OFFICE:

Veronica Petrichei, Office for Economic Development and European Integration, Tulcea Municipality City Hall

Ec. Cristina Cralea, Office for Economic Development and European Integration, Tulcea Municipality City Hall

SOCIAL Working Group:

Coordinator: ec. Stefana Zibileanu, Director, Department for Social Aid and Protection, Tulcea Municipality City Hall

ECONOMIC Working Group:

Coordinator: ec. Elena Grigore, Director, Economic Department, TMCH

ENVIRONMENTAL Working Group:

Coordinator: George Blejan, Eng., Vice-Mayor at the TMCH

Authority of Management for Regional Operational Programme

Valentina Rădoi – Director, Department of Programmes Management

Cezar Grozavu – Public manager, Department of Programmes Management

Consultancy from the National Centre for Sustainable Development:

Călin Georgescu – Project Manager

Radu-Ștefan Vădineanu – Coordinator

Tania Mihiu – Program Coordinator

Oana Voicu – Project Officer

Gheorghe Onuț – Social Research Coordinator

Daniel Toboș – Financial Coordinator

Dan Apostol – Editorial Consultant

Olivia Popescu – Editing Assistant

TABLE OF CONTENTS

Foreword by the Resident Representative of the United Nations Development Programme in Romania

Foreword by the Mayor of Tulcea Municipality

I. STRATEGY FOR SUSTAINABLE DEVELOPMENT

I.1 EVALUATION OF THE NATURAL CAPITAL	5
I.1.1 Location and Relief	9
I.1.2 Climate	9
I.1.3 Soil and Subsoil	2
I.1.4 Quality of Environmental Factors: Air, Water, Noise	1
I.1.5 Green Spaces	2
SWOT ANALYSIS	Error! Bookmark not defined.
I.2 Evaluation and Development of the Antrophic Capital – STRUCTURE OF THE ECONOMIC SYSTEM	1
I.2.1 Basic Infrastructure	1
I.2.2 Energy and Energy Resources	1
I.2.3 Industry	1
I.2.4 Transportation	2
I.2.5 Communication	3
I.2.6 Commerce	3
I.2.7 Waste Management	3
I.2.8 Financial Services	5
I.2.9 Land Management	5
SWOT ANALYSIS	Error! Bookmark not defined.
I.3 SOCIAL CAPITAL	1
I.3.1 Population	1
I.3.2 Healthcare	1
I.3.3 Education	1
I.3.4 Social Assistance	3
I.3.5 Public Order and Safety	3
I.3.6 Tourism	1
I.3.7 Sports	2
I.3.8 Mass Media	3
I.4 OBJECTIVES	4
I.4.1. General Objectives	4
I.4.2 Specific Objectives	4
I.4.3 Strategic Principles	3

Foreword by the

United Nations Development Programme Resident Representative in Romania

I'm very pleased to present the overview of the *Local Agenda 21 (LA21)* implementation in Romania during the 2006 – 2007 phase. This document grew out of the needs and ideas of local stakeholders in three new cities and two counties, and sought to strengthen local contributions in setting developing priorities according to European Union accession requirements.

So, we would like to thank these people, citizens, businesses, academics, NGOs and local authorities, not only for their technical assistance, but also for their efforts, energy and enthusiasm which contributed to the creation of this high-quality sustainable development plan.

Local Agenda 21 (LA21) is a UN initiative first adopted at the Earth Summit held in Rio de Janeiro in 1992 as a vehicle for promoting sustainable development at local levels. Ten years later, in Johannesburg in 2002, the second global summit promoted LA21 as the principal instrument to use in achieving the well-being of the world's population. Aimed at local administration, LA21 promotes, through public participation, a real balance between economic growth, social equity, and environmental protection.

The concept of sustainable development calls for a constant re-evaluation of the relationship between man and nature, and solidarity between generations, as the only viable option for long-term development.

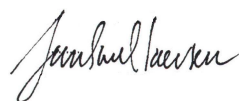
In Romania, UNDP has been actively promoting sustainable development since 2001 by conducting the project "Building Local Capacity to Implement the Local Agenda 21". So far, the project was implemented in 30 cities and two counties. It first started with nine pilot cities during 2000 – 2002, an additional thirteen cities during 2003 – 2004, and three more cities and one county during 2004 – 2005. During the period 2005 – 2006 the project expanded to three cities and a county. Each year, the project implements LA 21 in a new set of cities, under the coordination of the National Centre for Sustainable Development, UNDP's implementing agency for LA21.

The 2006 – 2007 implementation phase was placed within the national framework of Romania's following specific requirements to secure EU accession. To this end, UNDP Romania signed a Memorandum of Understanding with the Ministry of Development, Public Works and Housing, which set a new approach of the Local Agenda 21 implementation process in Alba Iulia, Alba County, Tulcea, Tulcea County and Falcu.

The result, presented in this document, is a coherent strategy with a concrete action and implementation plan. Both offer a concrete certification that the project can meet the needs of the community and represent an important contribution to sustainable development in Romania.

These good quality local sustainable development plans will improve the future of these communities, which, in turn, will enhance people's lives in the long run. They will also help the Regional and National authorities to pursue coherent policies at all levels which will contribute to the sustainable development of the entire country.

Jan Sorensen



**UNDP Resident Representative
UN Resident Coordinator**

Foreword by the

Mayor of Tulcea Municipality

A sustainable community is one, which controls its development process and one that controls the decisions it makes and implements, ensuring sustainability at local level.

A sustainable community uses its own resources to provide for the needs of the current generation, while at the same time securing the necessary resources for future generations. It pulls together its capacities to ensure healthcare services of high standards, a high standard of life for all residents through good waste management, preventing pollution, maximising environmental protection and through developing local resources and using them efficiently for the revitalisation of the local economy.

In this context, through the implementation of the Local Agenda 21 Program, we express our intention to transform the Municipality of Tulcea into a sustainable community, one that pulls together all its resources for the improved standard of living of its population.

At present time, this community has completed its own Plan for Sustainable Development, with the help of the main local players (local public institutions, civil society, the business community, local mass media, and citizens).

We also thank the United Nations Development Programme and the National Centre for Sustainable Development for the careful coordination and support in the implementation of the Local Agenda 21 Programme, and in the development of the Plan for Sustainable Development for Tulcea Municipality.

This document is our business card for the years that follow.

I would like to thank everyone who has contributed to the development of the Plan for Sustainable Development for Tulcea Municipality. Your participation today offers us a practical guarantee that the project will answer tomorrow's needs of the community in which we live!

Mayor of Tulcea



Dr. CONSTANTIN HOGEA, Eng.

I. EVALUATION OF THE ACTUAL STATUS AND SUSTAINABLE DEVELOPMENT STRATEGY

I.1 EVALUATION OF THE NATURAL CAPITAL

I.1.1 Location and Relief

In European geography, Tulcea is in the area where the Danube, after having crossed 2,860 km, flows into the Black Sea through the three arms: Chilia, Sulina and Sfântu Gheorghe.

Tulcea Municipality, a port of the Danube and gate for the Delta and for the entire world, is the capital city of the county with the same name. In accordance with archaeological, epigraphic, numismatic and cartographic springs, the territory of the city has been inhabited by some stable communities, which have evolved from pre-history to today. The old name of Aegyssus derives from "Caspus Aegyssus", the one who is said to have established the city and who named the settlement after his own name: "An old citadel is from the Danube or Istru, / With solid walls: not easy to enter/ Aegyssus built it and called it also Aegyssus" – as confirmed by Publius Ovidius Naso.

Tulcea was a part of Wallachia during the reign of Mircea cel Bătrân, and then, for nearly five centuries, was under Ottoman occupation – between the years 1420 and 1877. According to some researchers, Tulcea's name comes from the historic economic character of the settlement, and namely the production of bricks (tucla = brick). After the Second World War, the city expanded and was modernised.

The Municipality of Tulcea has a surface area of 19 km², and is located 125 km away from Constanta, 267 km from Bucharest (by highway), and 71.3 km from the Black Sea (by water transport). Tulcea is an industrial, modern city. It serves as a port for passenger and industrial ships, especially ships transporting raw materials and those for ocean fishing.

The settlement has been mentioned from ancient times as a principal strategic, social and economic centre in Northern Dobrogea. It has been a county capital since 1878, and a municipality since 1968. Tulcea is the largest city in Northern Dobrogea, located in the northeastern part of the county by the same name, and has a population of 92,652 inhabitants.

The city's natural environment is the large amphitheatre facing the Danube, where all roads from the Dobrogea plateau meet and also here connect with the Danube, which touches the old road of Tulcea between miles 38 and 39, and then follows its route, pouring into the sea.

The town is surrounded by seven hills with low altitudes (100 – 200 m), of which the closest ones are: Hora Tepe to the North East, Carierei Hill to the South East, Big Hill to the South and the Taberei Hill. The city is bordered by the large bodies of water, which form another ring around it, interrupted only on the South side. As such, to the North is the Tulcea al Dunării elbow, to the East – Lake Zăghen, and to the West the Somovei Marshes.

The suburban Tudor Vladimirescu also is a part of the municipality, located on the left bank of the Tulcea, in a low plain.

I.1.2 Climate

The climate is continental-excessive, with low levels of precipitation (below 400 mm / year), warm summers with cold winters marked by storms and high temperatures (66.3⁰ C). As the area is close to the continental zone of Russia, there are cold air currents from the North East towards the South West, which cause the North Wind. In the summer

time, strong winds bring warm air, which dries the land and creates dust.

Average monthly temperatures recorded in the weather station, during 2006, are as follows:

Jan	Feb	Mar	Apr	May	Jun	Jul	Aug	Sept	Oct	Nov	Dec
-3.9°C	-1 °C	5 °C	10.9 °C	16.7 °C	21.1 °C	22.9 °C	23.2 °C	17.7 °C	12.5 °C	7.1 °C	3.8 °C

The highest and lowest temperatures recorded in 2006 were as follows:

Annual average	Annual low	Annual high
11.3 °C	-20.9 °C: 23.01.2006	+35.6 °C: 21.08.2006

The amount of precipitation (l/m²) recorded in Tulcea in 2006 were as follows:

Jan	Feb	Mar	Apr	May	Jun	Jul	Aug	Sept	Oct	Nov	Dec
29.2	7.6	53.1	50.8	54.8	73.2	12.6	46.2	61.2	4.0	11.3	-

The amount of precipitation (l/m²) and the maximum amount of precipitation (l/m²) during 2006 were as follows:

Meteorological station	Total amount of precipitation	Maximum in 24 hours, and the date
Tulcea	421.4	57.6 – 30.06.2006

The main direction and average speed of wind recorded in Tulcea Municipality is presented in the table below:

Meteorological station	Main wind direction	Annual average speed
Tulcea	N, NV	2.8 m/s

Exceptional events include torrents with strong wind, temporarily with storm-like qualities, from the date of 30.06.2006, when 57.6 l/m² of precipitation were recorded in two hours.

I.1.3 Soil and Subsoil

On the surface of Tulcea Municipality, two types of soil can be found: dark ash soil, and levigated chernozems (weak, moderate, and strong), and in addition on more restricted areas, litho-soil and carbonic chernozems. This soil has the consistency of clay and loam, and is located in areas which are sensitive to water.

The soil consists of minerals originating from the degradation and alteration of rocks and organic material coming from the transformation of vegetal remains.

The thickness of the soil varies between 2 and 3.5 m, with a pH level of neutral-alkaline (6.7 – 7).

With regards to subsoil, Tulcea Municipality is located from a geo-structural point of view on a carbonic platform dating from the Triassic age in Northern Dobrogea. The Triassic carbonic platform pauses over a pre-mountainous foundation, which consists of crystal-philic formations.

On the Hora Tepe Hill, where the Independence Monument is located, today there is a pre-mountainous outcrop. The hills, which circumscribe Tulcea Municipality, consist of limestone, marl-limestone, and marble from the inferior Triassic age, highly cut into chimerical formations. These rocks are collected in quarries at Bidida I and II, and Trei Fântâni, and are used in urban and hydro-technical construction, or for the production of concrete.

I.1.4 Quality of Environmental Factors: Air, Water, Noise

Air Quality

In Tulcea Municipality, there are seven fixed production points which release gaseous pollutant factors, located as follows:

Area	Production Point
Centre	APIA Headquarters
NW	Water Plant
S – SE	EGA System
NE	APM Wharf
W	County Hospital
NW	S.C. AKER S.A.
E	Meteorological Station

In 2006, tests were carried out for the determination of the concentrations of SO₂, NO₂, NH₃, particles suspended in the air (metals – Cr, Mn) and sediment particles.

Compared to previous year, the annual emissions into the atmosphere fell by:

Emissions	Percent decrease
SO ₂	5%
NO _x	5%
NH ₃	8%

Emissions into the atmosphere of sulphur dioxide (SO₂), nitrous oxides (NO_x) and ammonium (NH₃) have an acidifying effect, which contributes to an alteration of pH levels in the air.

The main producers of gases, which have an acidifying effect, are:

- Combustion in industrial processes;
- Production of thermal energy in power stations;
- Transportation;
- Waste treatment.

The decrease of acidifying substances emitted into the atmosphere is due to a reduction in industrial activity in the municipality, and a reduction in the percentage of sulphur from the sources of energy used.

In 2006, there were no recorded excesses of MAC (maximum allowed concentrations) for any atmospheric pollutant:

Atmospheric pollutant	Annual average	MAC reporting
SO ₂ concentrations	0.00043 mg/m ³	<10%
NO ₂ concentrations	0.00259-0.01588 mg/m ³	<90%
NH ₃ concentrations	0.00264-0.01186 mg/m ³	<78%

Furthermore, suspended particles also decreased (Cr, Mn), as did heavy metals (Hg, Pb, Cd), persistent organic pollutants (POPs), tropospheric ozone (found between ground level and 8–10 km).

In Tulcea Municipality there are five economic entities, which, through the production process, use substances that cause tropospheric ozone (SERVIS FRIG SRL, GIVA SRL, CARNIPROD SRL, AKER SA, IORGUS SRL). Economic agents that have installations that generate emissions with greenhouse gasses are: ALUM SA, ENERGOTERM SA, TREMAG SA. Greenhouse gasses include: CO₂, CH₄, N₂O, HFC, PFC and HF₆. In 2006, there was a decrease in CO₂ emissions by 7%, a decrease in CH₄ by 2%, and a decrease in N₂O by 11% compared to the previous year. There were no critical events regarding atmospheric pollution during 2006.

If further damage to the equipment of some industrial entities took place, the western part of Tulcea could become a critical area. This is where

SC ALUM SA and SC FERAL SA carry out their activities.

In order to limit the release of harmful gases into the atmosphere, these companies have conducted environmental studies, and purchased equipment for the monitoring of emissions at release towers, installations for the purification of combusted gases, and filters for the retention of emissions for the release towers.

Water Quality

Water quality is reported for the year 2006. In this context, tests were carried out in Lake Ciuperca (beach sector and pumping station) and from the Danube. Lake Ciuperca falls under quality class I, except for oxygen, where it falls under quality class IV.

According to the tests carried out in Lake Ciuperca, the limits for all indicators were surpassed:

Indicator tested	Beach sector	Pumping station	Admissible limits mg/l
PH	7.962	8.191	6.5 – 8.5
CCO – Cr	57.881	61.165	10
CCO – Mn	22.761	23.825	5
CBO ₅	10.569	7.602	3
N – NH ₄	0.4944	0.4097	0.4
Total Cr	0.0094	0.0044	0.02
Zn	0.1567	0.0035	0.1
Pb	0.0071	0.0119	0.005

The Danube (Tulcea section Mm 38+500 m) falls under quality class II, except when it comes to oxygen, where it falls under quality class III.

In 2006, the highest breaches were recorded in organic substances, chlorine, nitrates, ammonium, phenols, and dissolved fractions of lead. The river's water is affected by waste from SC ALUM SA, water transport, and household waste.

Taking into account the Danube's course before it reaches Tulcea Municipality, as well as the collections it has on that course as well as the largely diluted debit of the river, it cannot be precisely stated the relation between the pollutants released by economic entities located in Tulcea Municipality. However, after the completion of tests on residual water waste, the following indicators were recorded:

Unit	Breaches - indicators
SC Alum SA	suspensions, extractions
SC Alum ind	suspensions, fixed residue, aluminium
SC Carniprod SRL	suspensions, fixed residue, CBO ₅ , chlorides, extractions, ammonium, nitrates, nitrites, ammonia, ammonium
SC Tabco SA	suspensions, organic substances, detergents, extractions, fixed residue, CBO ₅ , ammonium, nitrates
SC Textile Gel&Co	suspensions, CBO ₅ , ammonium, nitrates, extractions
SC Confectia SA	suspensions, CBO ₅ , ammonium, extractions, detergents, total phosphorus
County hospital	suspensions, CBO ₅ , ammonium, extractions, detergents
SC Tremag	suspensions, extractions
SC Aquaserv	suspensions, CBO ₅ , ammonium, extractions

In 2006, there were no critical events with regards to the pollution of surface or subterranean water.

Soil Quality

Soil quality can be influenced by the excessive use of fertilizers, or of chemicals for the protection of plants (herbicides, insecticides, fungicides, bactericides, virucides), as well as by the activity of the industrial sector (metallurgy, mining). Industrial activities in metallurgy have occupied temporarily the slag dump of SC Feral SA (84.1 ha), and the red lime residue dump at SC Alum SA (79.4 ha). The areas occupied by the technologic dumps will be rebuilt and turned into green spaces.

In 2006, tests were carried out to monitor soil quality in the following areas: meteorological station, Bidida wood, SGA system, Peco station, Tineretului Park, Victoria Park, SC Alum SA, water treatment plant, Oxygen factory and SC Feral SA. The critical areas in terms of soil degradation are those of the slag dump at SC Feral SA (high metal

concentration, especially Mn), and the alkaline limestone dump at SC Alum SA.

With regards to agricultural terrain, these fall under quality class III. No agricultural area falls within quality class I.

Noise Pollution

The evaluation and management of noise levels in the environment is regulated by HG 321/2005. In accordance with article 14, paragraph 2, point b), starting with 2011 (taking into account that Tulcea Municipality has less than 250,000 inhabitants) noise maps will be established as well as an action plan, including measures for the reduction of noise. The evaluation of negative effects of noise on the daily life of the population will be carried out through a dose-and-effect, in particular looking at:

- The relationship between discomfort and L_{zsn} for the noise produced by traffic (road, water, and air) and for industrial noise;
- The relationship between disturbed sleeping patterns and night L for traffic noise (road, water, air) and for industrial noise.

These dose-and-effect relationships are noted for:

- Soundproof buildings;
- Vulnerable sectors of the population;
- Industrial noise with important tonal components;
- Industrial noise with impulse characteristics.

Aggressive sound pollution can cause a degradation of the natural and urban environment, and has a complex reaction on organisms – depending on frequency, strength, and the location of the sources.

I.1.5 Green Spaces

The system of green spaces in Tulcea Municipality can be classified as “spots” – a characteristic of towns with mixed relief.

Green and leisure areas are relatively isolated throughout the city, as they are connected by a natural element (the park surrounding Lake Ciuperca). They are clustered around main buildings (Personalitatelor Tulcene Park – between Casa Cărtii and the Sports Hall, the green area around Casa Sindicatelor, Monument Park, green spaces in Civica Square), and also around artistic edifices (the park near the Spiru Haret statue). There are green spaces in residential areas, and trees planted along the main motor routes.

The existing green spaces have the characteristics of outstanding areas and have beautiful views, being bordered off by lawns, trees, bushes, and flowers.

The distribution of green and leisure spaces, in Tulcea Municipality, are as follows:

Type	Surface (m ²)	Green space per inhabitant
Parks	270,969	8.8 m ²
Tree linings	90,098	
Leisure areas and playgrounds	461,865	
TOTAL	822,932	

In order to improve the quality of public green spaces, it is important to better maintain the plant life, including the spread of plant life as well as its growth, as well as providing all necessary equipment. In this respect, we must especially consider the area of Lake Ciuperca by:

- Increasing the surface area for plant life in order to protect from pollution coming from the Western industrial area;
- Cleaning the waters of Lake Ciuperca;
- Improving the built environment through the completion of specific buildings, which are well integrated with the scenery.

SWOT ANALYSIS

STRONG POINTS

- Natural and environmental capital (diversity, variety);
- Attractiveness of the area;
- Positive tendencies towards the reduction of pollution;
- Good expertise in the environmental and natural domain;
- The existence of organised structures / institutions for: civil protection, disasters, an environmental inspectorate (EI); which is active, and other institutions specialising in environmental protection;
- Municipal sanitation is well organised, and competencies are well spread;
- We are in the process of obtaining an operating authorisation for the landfill;
- We are implementing the extension of the selective waste management system throughout the largest part of the city.

WEAK POINTS

- Ongoing operation of polluting companies;
- Lack of environmental criteria which all polluting economic agents must meet;
- Inefficient use of natural resources (water), over-usage of specific infrastructures;
- Industrial structure (metallurgy) with a strong impact on the urban air;
- Passive nature of NGOs and of the public (lack of organisational resources);
- Lack of systems for the integration of the environment (eco-management);
- Intensive neutralisation of environmentally friendly means of transport (bicycles), in urban areas contiguous to such activities – lack of managed areas (bike racks, special routes);

- Not meeting the environmental standards for the environment - ISO14000;
- Lack of protected areas in the municipality;
- Uncontrolled landfills / waste deposits;
- Atmospheric conditions, high frequency of the atmospheric calm and of thermal inversions that do not help remove pollutants from the atmosphere – by causing reduced air circulation in the Auto Park, as well as traffic jams.
- Heavy traffic in the centre of the city, especially on Babadag and Isacsei Streets which leads to breaching the noise levels allowed during rush hour;
- Old landfill has not been closed;
- Poor municipal sanitation at rush hour;
- Small number of green spaces, and the transformation of some existing green spaces;
- Lack of interest on the part of the public in keeping the town clean, including green areas and spaces around apartment blocks and residential areas;
- High number of stray animals.

OPPORTUNITIES

- Attract investors with financial resources for the implementation of environmentally friendly technologies;
- Development and implementation of programs and projects related to the environment, funded by international organisations;
- Applying the principle: “the polluter pays”;
- Re-formation of the local technical education system to include environment, sustainable development;
- Re-launching ecotourism throughout the whole year;
- Rediscovering traditional occupations;
- Higher learning institutions which educate specialists in the field of environmental protection;

- Partnerships with countries which are strongly developed economically;
- Creation of meeting points and workshops for the city's inhabitants;
- High number of volunteers and getting them actively involved in the municipality;
- Employment programs benefiting the community.

THREATS

- Losing control of global pollution, which leads to global warming;
- Soil erosion;

- Organisations and human activities not meeting environmental legal requirements;
- Risks around urban infrastructures (water, canals), including areas for the collection and release of water;
- Not applying strategies and small investments which have a big impact on the environment;
- High cost of replacing technology and of accelerated clearing pollution elimination;
- Globalisation;
- Organisations not meeting EU standards.

I.2 Evaluation and Development of the Atrophic Capital – STRUCTURE OF THE ECONOMIC SYSTEM

I.2.1 Basic Infrastructure

In Tulcea Municipality there are the following:

Type	Surface
Built area	504 ha
Roads	201 ha
Pedestrian areas	4 ha
Railways and connected constructions	23 ha
Waterways and connected constructions	10 ha
TOTAL	742 ha

I.2.2 Energy and Energy Resources

In Tulcea Municipality, the creation and distribution of thermal energy is centralised, and carried out by SC ENERGOTERM SA, a part of Tulcea Local Council. Currently, 70% of municipal living units are connected to the centralised system for the distribution of thermal energy. SC ENERGOTERM SA operates three thermal stations (two function with CLU and one with CLU and methane gas), and one boiler with hot water CAF that uses methane gas. The organisation serves 9,341 apartments.

The centralised system for the distribution of thermal energy is structured in two main compartments: the primary distribution network (which provides transport for the primary thermal agent), and the secondary network, which is responsible for the distribution of hot water.

Another economic agent that distributes thermal energy is SC DALKIA SRL Romania, Tulcea branch, which has 14 neighbourhood thermal stations (seven which function with CLU and seven with CLU and methane gas). SC DALKIA serves 4,350 apartments.

The education buildings in the municipality have their own thermal station. There are 18 of them (11 function with gas, 4 with CLU, and 3 with methane gas).

I.2.3 Industry

Economic activity in Tulcea is primarily represented by the construction industry, shipyards, metallurgy, construction material production, wood production, textiles (clothing and leather), and the food industry (fish, meat, milk products, wine, vegetables, fruit).

Aker Tulcea SA builds ships as well as chemical and oil tanks, port containers up to 1400 TEU, multi-functional ships, supply ships, and other types for the offshore industry; refrigerators and ships for coastal fishing, medium sea ferry boats, boats, steel constructions, and it can carry out repair work on ships, motors, and electrical equipment related to ships, having the ability to carry out most repairs.

Aluminium chloride is produced in Tulcea Municipality. This compound is the raw material necessary for the production of aluminium,

refractory products, and ceramics, cement, as well as in water treatment – carried out by SC Alum SA Tulcea.

The only producer of iron-alloy in Romania is located in Tulcea – SC Feral SRL Tulcea.

The light industry produces and sells textiles on the internal and external markets, with the most important actor being SC Confectia SA, whose activity is roughly 99% for export.

In the local economy, agriculture plays a small part. On the other hand, the fishing and fish processing industries have an important role, due to the special characteristics of the area and its geographic position.

SC Tulco SA is the main producer of preservatives and fish preserves, of fish flour as well as meat and mixed preserves.

The food industry is represented by two main units for the industrialisation and selling of meat, for the production of raw materials and animal production, industrialisation, depositing and selling meat products: SC Carniprod S.R.L and SC Tabco-Campofrio S.A.

I.2.4 Transportation

The geographic location and surface configuration have favoured the development of water transport, road transport, and air transport. The following ports are active in Tulcea Municipality: industrial, mining, tourism and commercial, which carry out the transportation of goods by boats with capacities of as high as 18,000 tdw.

Passenger water transportation – provide daily routes for passengers on the three arms of the Danube: Chilia, Sf. Gheorghe, Sulina. The main ports in the area of Tulcea Municipality are: IAMC port, industrial port, commercial port, and the passenger transport port.

Rail transportation – there is a passenger rail station and a merchandise rail station. The

passenger rail station provides 2 daily trains on the route Tulcea – Bucharest return, and 4 daily trains on the Tulcea – Constanta route return. Through the merchandise rail station raw materials and merchandise are transported to all areas of the country.

Road transportation – is provided towards all towns in the county. Connections outside the county are done through daily routes Tulcea-Bucharest, Tulcea-Constanța, Tulcea-Galați, Tulcea-Brăila and return.

Urban public transportation plays a very important role in the city's life, by providing connections with other functional areas, between residential and industrial areas, and between the leisure and cultural-administrative areas of the city. Public transport represents an important social element, as it facilitates the access of the population from disadvantaged areas of the city to all public services.

The urban public transport system is contracted to SC Transport Public SA Tulcea, which is the only actor of the Tulcea Local Council.

The local public transport allows for:

- Access for citizens to and from their place of work;
- Access to commercial areas;
- Access and establishment of facilities for education and leisure;
- Minimised risk of social exclusion: modes of transport are accessible to the disabled, the elderly, etc.

The urban public transport system includes 10 routes throughout the city, which are used by 46 transport units (busses).

Also, SC Transport Public SA Tulcea has an additional 7 transport units which run on county and inter-county routes, regular routes, or occasional routes.

Air Transport – is provided through the “Mihail Kogalniceanu” Airport, which is located 13km from the municipality, and where occasional charter flights land. Also from here there are permanent flight services for agriculture and health.

I.2.5 Communications

Communications in Tulcea Municipality have a well-developed infrastructure, due to the accelerated development of the communications sector and to the promotion and implementation of new products and services. Organisations have had the opportunity to improve and diversify their telecommunications systems, offering products and services similar to those offered throughout the European Union. The highest rate of development has been observed in the Internet and mobile telephone systems.

I.2.6 Commerce

In Tulcea Municipality, commercial units cover an area of 500,000 m². The most important ones are: PennyMarket Supermarket, WinMarkt, Telena, Fraher, Danaur, and Cilicom.

I.2.7 Waste Management

One of the most acute problems related to environmental protection is the production of waste in large quantities and the inadequate disposal of this waste.

In 2006, the Public Services Department – Local Council of Tulcea Municipality, published a number of points organised for the selective collection at 20 locations throughout the perimeter of Tulcea Municipality. It also implemented the “ERACOLECT” Program, a pilot program for the selective collection of waste – of plastic and paper waste – in partnership with SC ECOROM AMBALAJE SA Bucharest, by monitoring the selective waste management for one year. The project aims to invest EUR 35,000, non-reimbursable, for the organisation of selective waste disposal and monitoring for 10,000 people.

The collection points were provided with three Euro containers measuring 1.1 m² for the collection of paper, plastic, and PET waste.

Urban waste management

At municipal level, with the exception of compacting, which takes place in modern transportation vehicles, urban waste that is collected is not currently treated pre-depositing (reducing of volume through bundling, no mechanical or biological treatment).

Selective waste management at urban level and recycling is very limited. There has been an increase in such activities in the past 2 years, when pilot collection points for selective waste and for PET, paper, and plastic waste were placed throughout the municipality.

The Public Services Department – Local Council of Tulcea Municipality, the main player when it comes to sanitation, has extended selective waste management in 2006 by closing a contract with SC TRAIAN COMPANY SRL Constanta, in order to recycle used tires collected at county level.

Impact of waste management on the environment

Impact of urban waste management on the environment

At present, the collection, transportation, and accumulation of household waste is not properly being carried out, causing a negative impact on the environment.

Current waste management at county level does not meet standards, and impacts the environment – both directly and indirectly. Although the location of waste landfills is not generally near residential areas (i.e. agricultural landfill is located approximately 12 km from Tulcea), they still pollute through gasses, dust, leaks, etc.

Inappropriate waste management can cause physical, chemical, and biological changes. These

changes can occur at different time scales. Changes or transformations, which take place in landfills, can increase the impact on the environment around them, by:

- Producing greenhouse gases, carbon dioxide, and methane, through the decomposition of organic materials;
- Producing toxic gases or badly smelling gases through burning, through chemical decomposition (hydrogen sulphate), or through biological processes;
- Producing nutrients, which can contaminate surface or subterranean waters;
- Leaks (from rain water or through the decomposition of organic materials) which react with heavy metals and pesticides, and which can contaminate surface or subterranean waters.

Impact of industrial waste management on the environment

The largest quantities of industrial waste are caused by the mining industry. The Mine waste dumps have an impact on soil, mostly due to the fact that they take up a large area (an area which is taken out from economic use), and secondly due to inappropriate location.

In the case of the red residue dump at SC Alum SA, which has a surface area of 79.4 ha, the impact on the soil is due to water filtrations from the dump as well as through the infiltration of residue water in case of some accidents (bursts due to increased pressure, freezing, or due to clogged pipes). Also, the deposition of waste brought by wind from the beaches or edges of the dump can have a negative impact on soil quality, and these suspensions may contain metals which can be toxic to micro-organisms on which soil fertility depends, which will lead to poor crops.

The slag dump at SC FERAL SRL is a fixed anthropomorphic source, with regular pollution

emissions in the form of particles, whose frequency and intensity depends on meteorological conditions. Factors that favour the migration of pollutants towards receptors are strong winds and precipitations (on average, the largest quantity of these is in the month of June).

Initiatives adopted for the reduced impact of waste upon the environment

In 2006, special attention was paid to the problem of waste management at municipal level in Tulcea, with the bringing into effect of legislation to meet European Directives and the National Strategy for Waste Management.

Initiatives adopted by economic agents, institutions, NGOs

In order to implement the directive for the management and reduced impact of waste on the environment, economic agents and the local public administration have adopted the following initiatives:

SC Alum SA is implementing a program for the progressive reduction of sulphur dioxide emissions, for dust in combustion gases to meet the figures established by the current legislation, as well as a program for the elimination of aluminium loss through the installation of filter mechanisms on the transportation route for alumina into calcifiers and silos, and installations for the elimination of dust from the station for loading alumina into trucks.

SC FERAL SRL implemented the treatment of technological waste (slag and purification dust) into secondary products used in other areas of activity. This way, in 2006, SC FERAL SA did not deposit slag or purification dust caused by technological processes. The dust is re-introduced into the technological process, and the slag is used for infrastructure works.

SC Ecorec SA Popesti Leordeni – work point Tulcea is in the process of obtaining an

Environmental Integration Agreement for the project “Waste management by area for municipal industrial, non-hazardous waste” – located in the Vărărie area, Ciuperca Hill, and the North – North Western area of Tulcea Municipality.

The total surface area of the landfill is 220,000 m², which will be divided into 8 cells for waste deposits, of which 4 cells will be for municipal, household, and biodegradable waste, and the other 4 for non-hazardous industrial waste.

The total capacity for waste deposits will be of 1.7 million m², for a period of at least 20 years. The landfill will cater to circa 260,000 inhabitants, namely the population of Tulcea County.

In terms of selective municipal waste collection and in particular recyclables (paper, PET, plastic), in 2006 in Tulcea Municipality, a pilot program for selective waste collection was implemented in neighbourhoods C5 and I.L. Caragiale. Tulcea Municipality City Hall – Public Services Department in partnership with SC EcoRom Ambalaje SA carried out the pilot program, named “Eracolect,” and it benefits from a non-reimbursable investment

of EUR 35,000. As a part of this project, all 13 points for selective waste collection were established, with the help of the Centre for Education in Waste Management, and public education took place in two neighbourhoods.

The Public Services Department of Tulcea Municipality City Hall established 19 points for selective waste collection in Tulcea Municipality.

I.2.8 Financial services

In the financial services sector, in Tulcea Municipality, there are branches of 17 banks and 17 insurance firms, which offer to economic agents and legal persons a large array of products and specific services.

I.2.9 Land Management

The administrative area of Tulcea Municipality is of 19,830 ha.

The survey carried out by the General Urban Plan in 1996, which is set to be renewed, shows the following:

INNER CITY		OUTSIDE THE CITY	
Type	Surface	Type	Surface
Agricultural area	31 ha	Agricultural area, of which	13,147 ha
Forested area	11 ha	a) arable	10,398 ha
Area permanently covered by water	24 ha	b) vineyards and tree nurseries	1,535 ha
Productive area	27 ha	c) orchards and tree nurseries	366 ha
Built environment, of which:	1.165 ha	d) meadows	848 ha
a) Central area and other areas with complex functions of public interest	146 ha	Water and ponds	2,141 ha
b) Residential areas and areas related	504 ha	Forests	1,461 ha
c) Industrial and agricultural units	323 ha	Surface water	1,431 ha

d) Green areas, meadows, leisure and tourism	145 ha		
e) Communal administration	47 ha		
Areas with special purposes and territory equipment	392 ha		
TOTAL	1,650 ha	18,180 ha	

SWOT ANALYSIS

OPPORTUNITIES

STRONG POINTS

- Increase in SME contribution to PIB;
- Free economic areas;
- Uniformly distributed public road network;
- River and sea ports;
- High economic potential of the Danube Delta: one of the major natural reservations in the world;
- Diversified industry, with high productivity (metallurgy, ship construction).

- Stable and rapid regional economic growth and conversion;
- Increase in degree of local attractiveness;
- Potential for development of tourism niches;
- EU funding programs for the extension / restoration of public utilities / urban transport infrastructure, etc;
- Diversified economic activities, especially in the services and technology sectors;
- High international interest in the conservation of biodiversity and promotion of tourism in the Danube Delta.

WEAK POINTS

- Economic decline of many industrial centres (mining, textiles, etc);
- Limited access to local transportation, communications infrastructure, and IT;
- Insufficiently developed business infrastructure;
- Reduced level of financial resources available to local authorities;
- Limited technological and management facilities;
- Reduced development of the SME sector;
- Old water sewage systems.

THREATS

- Inability of local authorities to attract funds for the co-financing of large infrastructure projects;
- Limited access infrastructure towards isolated towns with high tourism potential;
- Lack of collaboration between enterprises and research centres;
- Increased de-industrialisation; reduced capacity to fund the modernisation and improper management of wholesale markets.

I.3 SOCIAL CAPITAL

I.3.1 Population Dynamics

The demographics and structure of the population of Tulcea Municipality, according to statistics from the 2002 census, are as follows:

TOTAL POPULATION		91,875
Of which:	Women	45,274
	Men	46,601

Structure of the population by age group:

TOTAL POPULATION -2002-			91,875	TOTAL POPULATION -2005-			92,876
AGE	MALE	FEMALE		MALE	FEMALE		
0-4 years	1,968	1,923	3,891	2,075	2,015	4,090	
5-9 years	2,057	1,986	4,043	2,045	1,966	4,011	
10-14 years	3,795	3,638	7,433	2,358	2,237	4,595	
15-19 years	4,609	4,423	9,032	4,389	4,305	8,694	
20-24 years	4,012	3,577	7,589	4,009	3,892	7,901	
25-29 years	3,817	3,623	7,440	4,160	4,269	8,429	
30-34 years	4,387	4,952	9,339	3,670	3,769	7,439	
35-39 years	3,063	3,406	6,469	3,973	4,829	8,802	
40-44 years	3,789	4,054	7,843	3,296	3,586	6,882	
45-49 years	4,311	4,570	8,881	3,962	4,388	8,350	
50-54 years	3,411	3,256	6,667	3,900	4,049	7,949	
55-59 years	1,855	1,858	3,713	2,596	2,638	5,234	
60-64 years	1,515	1,609	3,124	1,587	1,645	3,232	
65-69 years	1,201	1,465	2,666	1,250	1,577	2,827	
70-74 years	811	1,116	1,927	955	1,271	2,226	
75-79 years	444	690	1,134	535	761	1,296	
80-84 years	140	274	414	235	432	667	
85 years and over	89	180	269	77	175	257	

An analysis of the population of Tulcea Municipality from 2002-2005 shows an increase (1.09%), balancing the ageing population. The effects of the ageing of the population is and will be felt in the economic sphere as well as in the social one,

putting into effect social protection measures for the elderly.

Of the total 91,875 inhabitants, 11,105 (12.08%) are pensioners: 5,501(49.53%) men and

5,601(50.47%) women, with the average life span of 68.80 years – 64.97 years for men and 72.95 years for women.

The negative effects of the ageing of the population, especially those related to the work force and the socio-medical long-term care sector, will be increasingly felt.

While until 2002 the birth rate was decreasing, since 2003-2004, the registered birth rate has had a slight positive trend due to measures put in place to stimulate increased birth rates. Since 2002, there has been an increase in population growth from 3.48% to 38.84%, simultaneous with an infant mortality rate of 1.61% in 2001 and 1.57% in 2005.

Year	2002	2005
Population	91,875	92,876
Newborns	773	883
Deaths – total	747	636
Deaths – under 1 years of age	12	10
Natural growth	26 (0.28%)	248 (2.68%)

With regard to the named considerations, there may be changes in the population growth of Tulcea Municipality, mainly due to both increased birth rates and decreased death rates.

Ethnic structure of the population:

The city's population is of 91,875 inhabitants (as of 18 March 2002), of which 90.73% are Romanian and 9.23% belong to minority groups (Russians, Lipovens, Ukrainians, Turks, Tatars, Italians, Armenians, Hungarians, Germans, Rroma, Jews, Greeks, etc).

Total	TULCEA COUNTY	TULCEA MUNICIPALITY	TULCEA Town	TUDOR VLADIMIRESCU Place
Population	256492	91875	91492	383
Romanians	227293	83919	83540	379
Aromanians	3495	813	813	0
Vlachs	55	41	41	0
Hungarians	131	69	69	0
Szeklers	4	0	0	0
Rroma	2272	1260	1260	0
Germans	81	56	55	1
Saxons	9	0	0	0
Swabians	1	1	1	0
Ukrainians	1279	615	614	1
Serbians	8	3	3	0
Turks	334	1274	1274	0
Slovaks	10	9	9	0
Jews	21	20	20	0
Russians	2767	569	569	0
Lipovens	13583	2560	2558	32
Bulgarians	61	32	32	0

Czechs	2	0	0	0
Croatians	14	10	10	0
Greeks	1680	412	412	0
Polish	18	7	7	0
Armenians	10	7	7	0
Slovaks	2	0	0	0
Ruteni	0	0	0	0
Carosoveni	1	1	1	0
Italians	134	25	25	0
Chinese	29	0	0	0
Albanians	1	1	1	0
Găgăuti	2	0	0	0
Macedonians - Slavs	5	3	3	0
Cangai	0	0	0	0
Other ethnicities	40	17	17	0
Not declared	8	2	2	0

Religious structure of the population:

Structure	TULCEA MUNICIPALITY	TULCEA	TUDOR VLADIMIRESCU
Population	91875	91492	383
Orthodox	88269	87888	381
Roman-Catholic	347	346	1
Greek-Catholic	73	73	0
Evangelical Augustine	2	2	0
Lutheran-Presbyterian	2	2	0
Unitarian	1	1	0
Armenian	0	0	0
Lipovens	1184	1183	1
Baptist	155	155	0
Pentecostal	58	58	0
Seventh Day Adventism	90	90	0
Mennonites	36	36	0
Evangelical	13	13	0
Muslim	1433	1433	0
Mosaic	20	20	0
Other religion	137	137	0
Atheism	23	23	0
No religion	10	10	0
Religion not declared	10	10	0

In Tulcea Municipality, approximately 23 ethnicities have been living together in harmony for centuries, whose customs and beliefs have been integrated in the cultural and spiritual life of the region. The practice of religion and of individual or group (no

matter what size) traditions has been considered by the majority orthodox population as a perpetual right of any ethnicity, respecting the communication of ideas, customs, and religious cult of each one.

Civil structure of the population:

TOTAL POPULATION			91,875
	MALE	FEMALE	
Single	20,533	17,301	37,834
Married	20,921	20,921	41,842
Widowed	1,006	4,457	5,463
Divorced	2,452	1,374	3,826
Civil marriage	1,455	1,455	2,910

The active and inactive population, by sex:

Structure of active population	Women	Men	Total
	19,504	21,602	41,106
Employed	17,699	18,956	36,655
Unemployed looking for first job	782	1,185	1,967
Unemployed looking for a new job	1,023	1,461	2,484

According to statistics, in Tulcea Municipality, at 01.04.2006, there were 5,179 registered unemployed persons of whom 2,749 were receiving unemployment aid, and 2,430 did not receive aid (unemployment rate of 5.6%). Of the total number of unemployed persons, 3295 are men and 1884 are women.

The rate of unemployment went from 5% in 2002 to 5.6% in 2006 because:

1. Collective availability;
2. Lack of jobs for new graduates from professional schools, both pre and post university;
3. Lack of correlation between supply and demand of skills and job offers, especially

for the unemployed aged between 30-40 years;

4. Negative evolution of socio-economic activities, of employment opportunities for younger generation and for the elderly;
5. High number of unemployed men. At 01.04.2006, men represented 64% of the total number of unemployed in Tulcea Municipality.

Since unemployment is a multi-dimensional factor (economic, psycho-social, cultural, political), one which covers a large number of situations, the border between employment, unemployment, and inactivity, is undetermined.

While increasingly there are atypical forms of employment, under the notion of “inactive population”, there are hidden forms of unemployment such as early retirement, long term unemployment, as well as those undertaking professional development and conversion. Also, employment on the black market blurs the line between employment and occupation.

In accordance with Law No. 76/2002 regarding the support system for unemployment and the promotion of employment, the County Employment Agency and the Centres for professional development promote a new strategy to the market, emphasising on the one hand the involvement of economic entities, and on the other hand the active encouragement of those looking for employment.

Structure of inactive population	Women	Men	Total
	27,097	23,672	50,769
Pupils, students	9,248	9,359	18,607
Pensioners	7,035	6,234	13,269
Homemakers	6,539	550	7,089
Supported by others	3,475	4,465	7,940
Supported by the state or by private institutions	325	380	705
Other	475	2,684	3,159

The inactive population represents 55%, while the employed population represents 40%.

Structure of the population by profession:

TOTAL ACTIVE POPULATION BY PROFESSION	39,139
Salaried	37,008
Owners	699
Self employed	268
Members of agricultural societies, cooperatives	10
Workers on family owned farms	47
Other	13
Not declared	1,094

Structure of employers by economic sector:

ECONOMIC SECTOR	EMPLOYERS
Agriculture, forestry, hunting	15
Fishing and pisciculture	5
Mining	1
Processing industry	38
Electrical and thermal energy, gas and water	0
Construction	16
Trade, auto repairs, home repairs	548

Transport, storage, post, telecommunications	15
Financial services – banking and insurance	1
Hotels and restaurants	15
Real estate	17
Healthcare and social aid	2
Other	24
TOTAL	699

Structure of the employed population by means of financing:

TOTAL SALARIED	39,139
State	12,365
Private	24,276
Mixed	1,375
Own farms	28
Not declared	1,095

Structure of the population by professional activity:

Working in:	2002
Agriculture and silviculture	1,153
Fishing and pisciculture	316
Mining	277
Processing industry	12,767
Electrical and thermal energy, gas and water	778
Constructions	2,481
Trade, auto repairs, home repairs	5,098
Transport, storage, post, telecommunications	2,861
Financial services – banking and insurance	616
Hotels and restaurants	479
Real estate	724
Public administration	3,834
Education	2,176
Healthcare and social aid	2,064
Other	978
Employed on farms / households	47
Extra-territorial organisations	6

The socio-economic structure of the population is related to the economic development of the city, a prime factor in the employment of the inhabitants, and the level of demand for people from all levels of professional development.

Taking into account that in Tulcea Municipality the processing industry is developed, there has been an increase in employment – especially of women – in this sector, leading to a reduced rate of unemployment among women.

There has also been a transfer of employment from the production sectors, except for the processing industry, to the trade sector where 78% of economic entities are (namely 548 of 699 economic entities), which shows a positive trend in services and commerce in Tulcea Municipality.

I.3.2 Healthcare

Analysis of the levels of health in Tulcea Municipality

The county's population was 254,455 inhabitants in 2003, of which 229,963 were insured; there were 253,419 with 224,003 insured in 2004, and 252,485 with 226,178 insured in 2005.

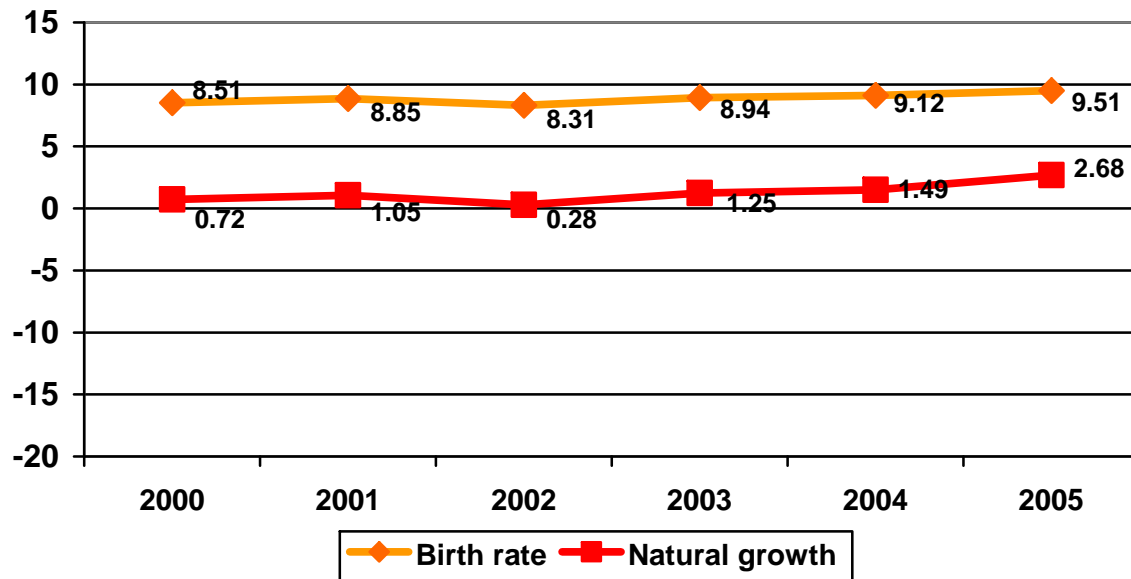
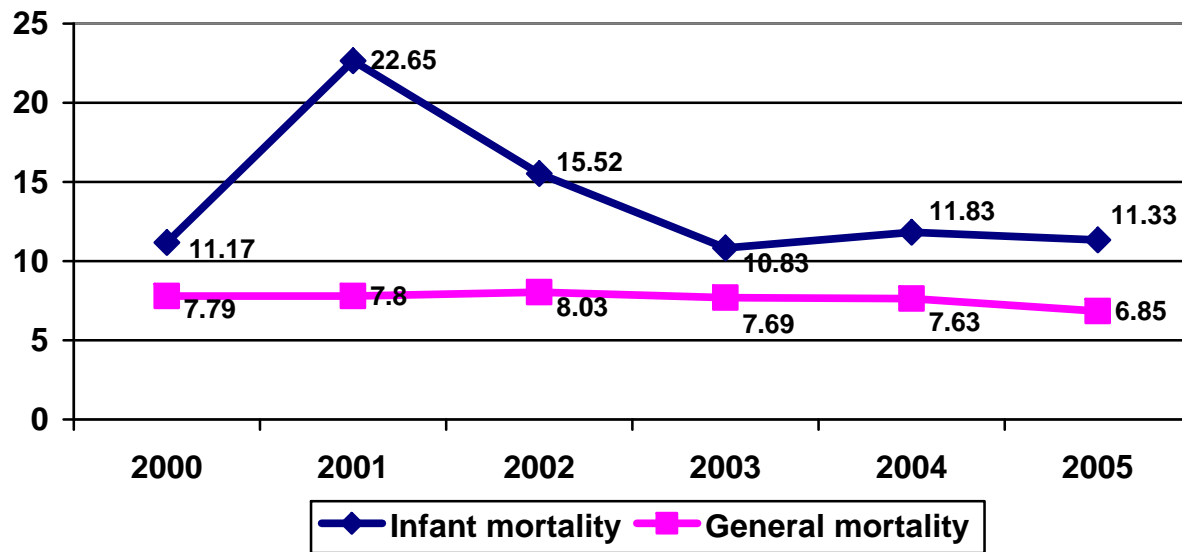
Year	% insured
2003	90.3
2004	88.3
2005	89.5

Demographic indicators

	Numbers of			
	Live births	Deceased	Natural growth	Deceased under 1 year of age
2000	806	738	68	9
2001	839	739	100	19
2002	773	747	26	12
2003	831	715	116	9
2004	845	707	138	10
2005	883	736	248	10

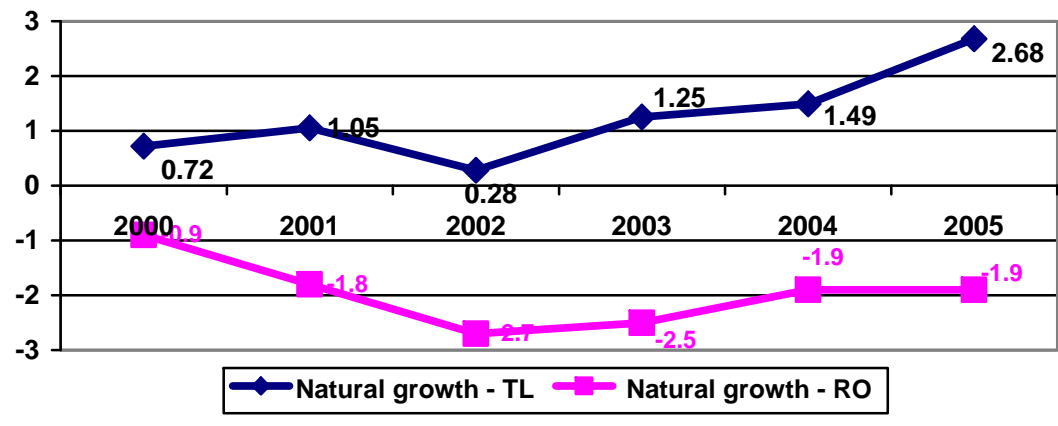
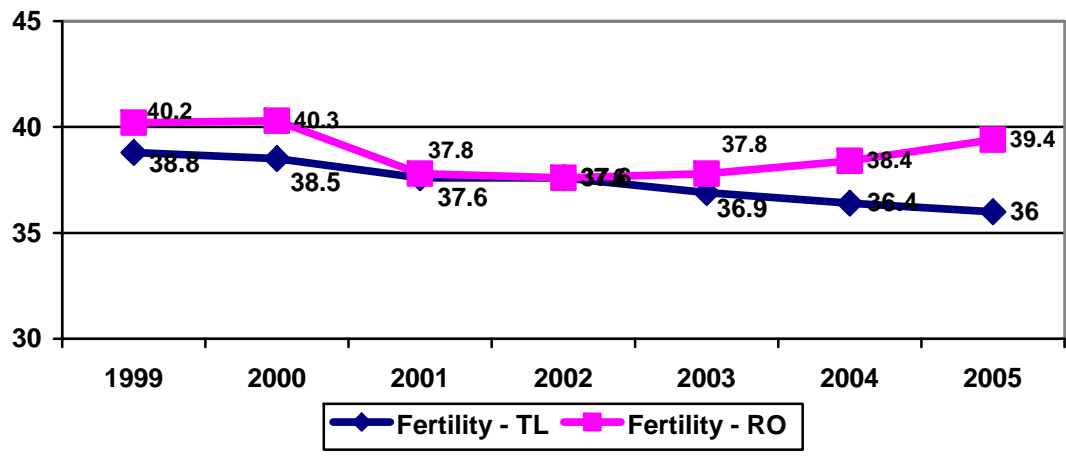
Indicators /1,000 inhabitants

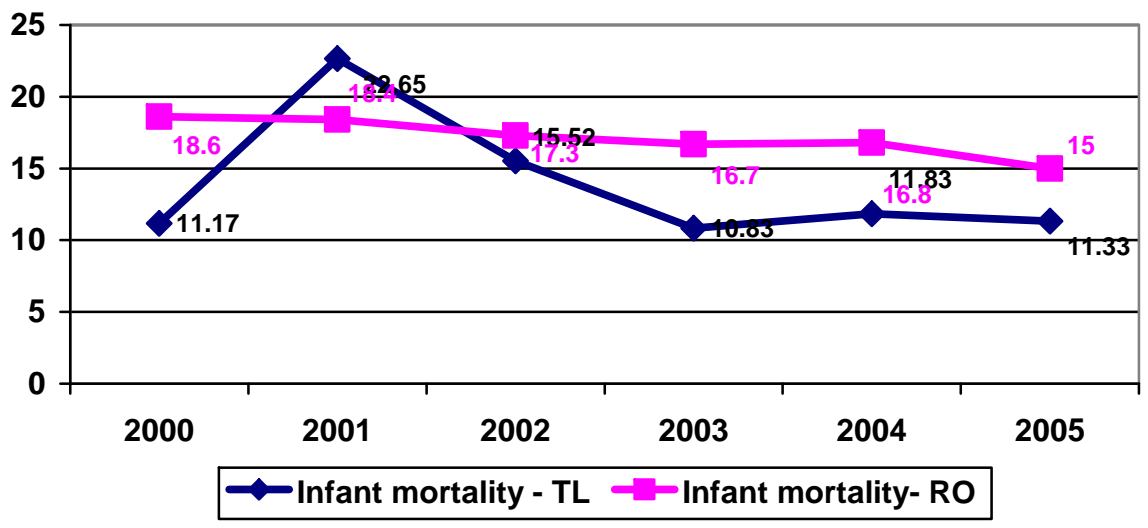
Indicators	2000	2001	2002	2003	2004	2005
Infant mortality	11.17	22.65	15.52	10.83	11.83	11.33
General mortality	7.79	7.8	8.03	7.69	7.63	6.85
Birth rate	8.51	8.85	8.31	8.94	9.12	9.51
Natural growth	0.72	1.05	0.28	1.25	1.49	2.61



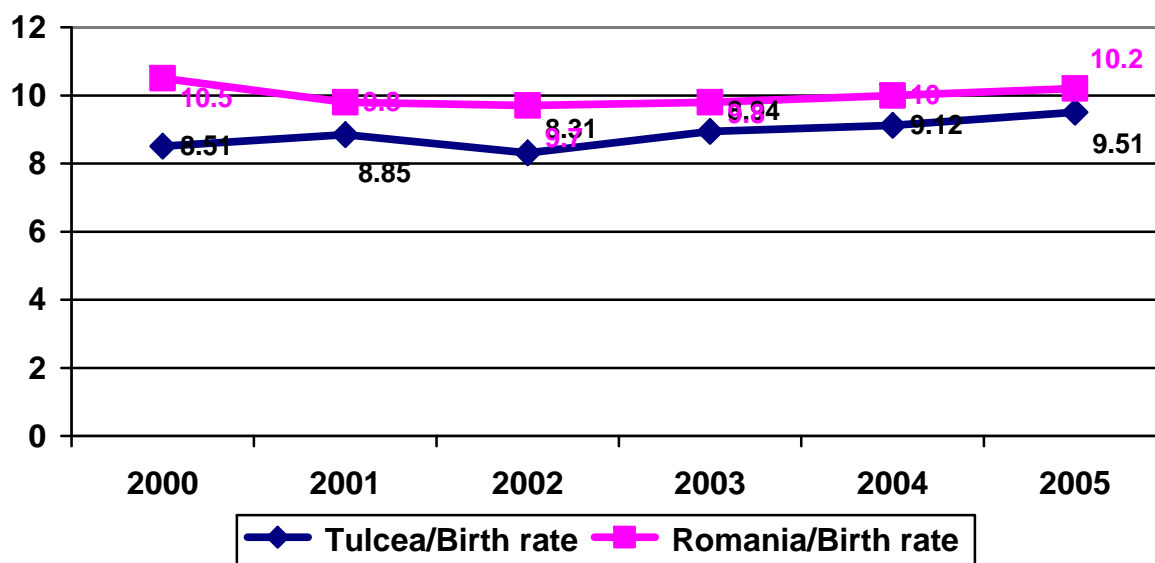
Natural movement of the population

		2000	2001	2002	2003	2004	2005
Tulcea	Fertility	38.5	37.6	37.6	36.9	36.4	36.0
Romania	Fertility	40.3	37.8	37.6	37.8	38.4	39.4
Tulcea	Natural growth	0.72	1.05	0.28	1.25	1.49	2.68
Romania	Natural growth	-0.9	-1.8	-2.7	-2.5	-1.9	-1.9
Tulcea	Infant mortality	11.17	22.65	15.52	10.83	11.83	11.33
Romania	Infant mortality	18.6	18.4	17.3	16.7	16.8	15.0





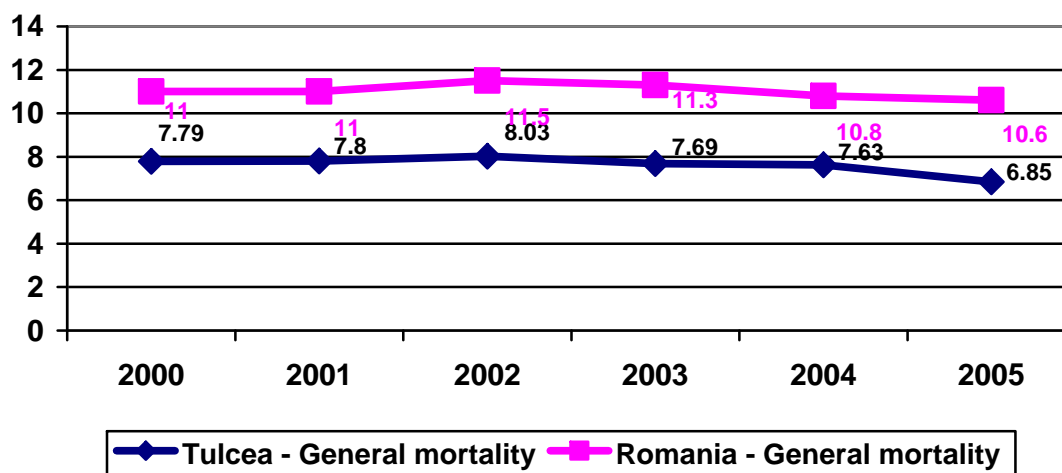
	2000	2001	2002	2003	2004	2005
Tulcea/Birth rate	8.51	8.85	8.31	8.94	9.12	9.51
Romania/Birth rate	10.5	9.8	9.7	9.8	10.0	10.2



Indicators related to general mortality

- Deaths / 1000 inhabitants-

	2000	2001	2002	2003	2004	2005
Tulcea - General mortality	7.79	7.80	8.03	7.69	7.63	6.85
Romania - General mortality	11.0	11.0	11.5	11.3	10.8	10.6



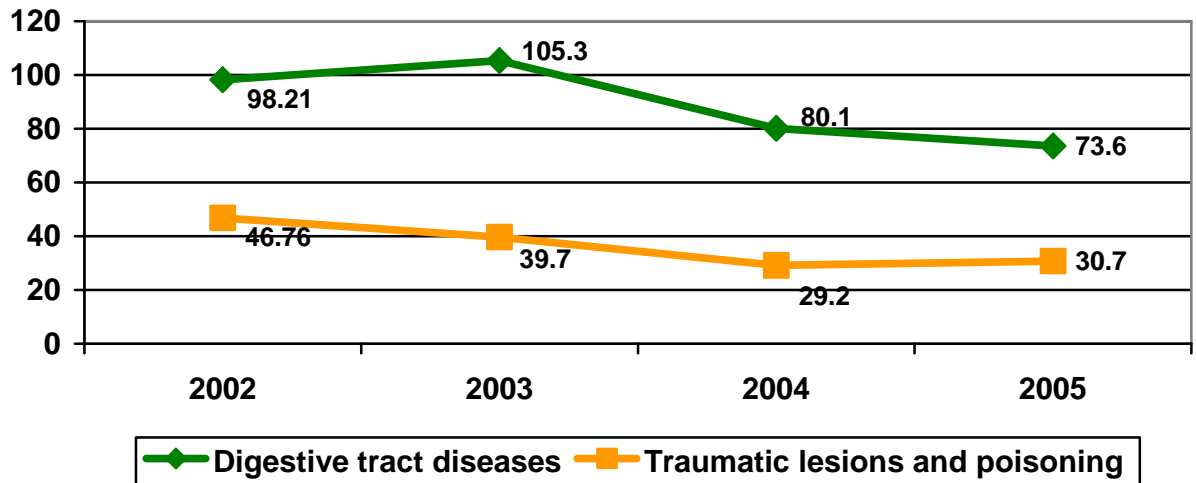
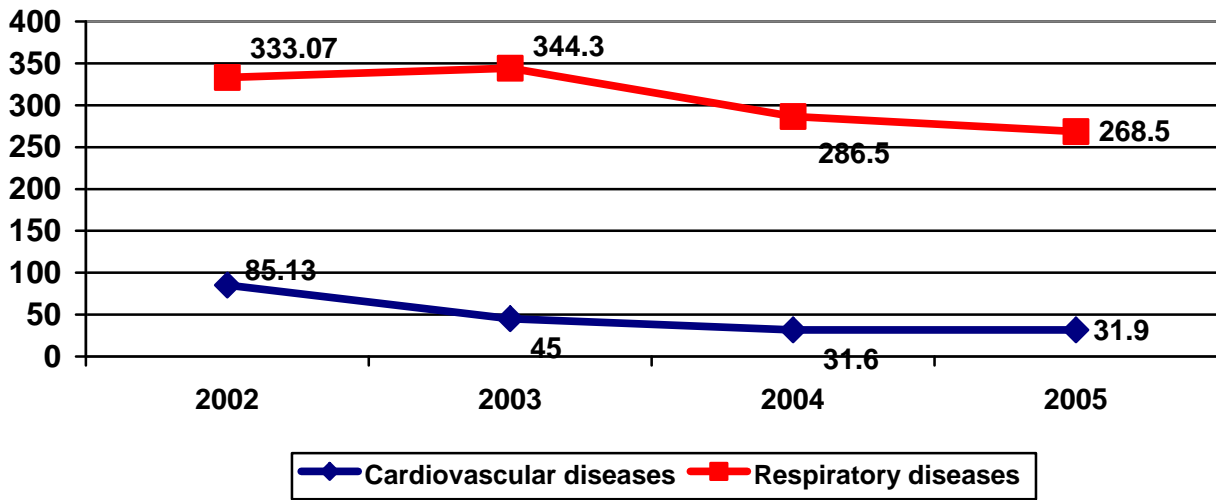
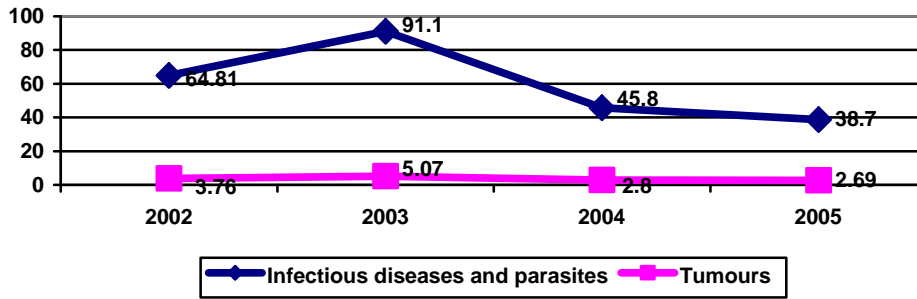
Average lifespan

	Male		Female	
	Years 2002-2004	Years 2003-2005	Years 2002-2004	Years 2003-2005
Tulcea	65.90	67.18	72.77	73.82
Romania	67.74	68.19	75.06	75.47

Death rates –Tulcea Municipality

- For every 1,000 inhabitants -

Indicators	2002	2003	2004	2005
Infectious diseases and parasites	64.81	91.1	45.8	38.7
Tumours	3.76	5.07	2.8	2.69
Cardiovascular diseases	85.13	45.0	31.6	31.9
Respiratory diseases	333.07	344.3	286.5	268.5
Digestive tract diseases	98.21	105.3	80.1	73.6
Traumatic lesions and poisoning	46.76	39.7	29.2	30.7



There has been increased access to reproductive health services, through an increase in family doctors (90%) who completed basic courses in family planning financed by UNFPA, and who therefore have the ability to distribute contraceptives free of charge to women of fertile

age who are unemployed or who do not benefit from state aid, to aged women, and to students. 20 nurses completed the family planning course in 2004, and in 2005, the course was completed by 29 nurses and 19 doctors.

	2000	2001	2002	2003	2004	2005
Hospital beds	1,058	1,058	1,070	1,013	1,051	1,052
Nursery beds	200	200	200	142	150	143
Doctors in the public sector	171	164	160	179	166	184
Of which, family doctors	-	-	-	29	31	22
Private sector doctors	37	30	11	22	30	32
Of which, family doctors	-	-	-	9	13	20
Public sector dentists	11	15	10	15	17	23
Private sector dentists	4	23	27	24	17	19
Public sector pharmacists	12	10	2	18	12	1
Private sector pharmacists	19	19	20	16	29	13
Public sector healthcare staff	784	776	788	782	867	814
Private sector healthcare staff	83	23	41	28	30	30
Public sector hospital	1	1	1	1	1	1
Public sector medical surgeries	13	3	4	4	4	2
Regional public sector medical surgeries	13	3	-	-	-	-
Medical surgeries in schools	-	-	-	6	6	8
Individual medical surgeries	-	-	-	28	26	17
Day nurseries	3	3	3	3	3	3
Centres for blood transfusions	-	-	-	-	-	1
Public sector pharmacies	3	3	2	2	2	1
Private sector pharmacies	24	12	20	22	16	10
Public sector pharmaceutical locations	1	-	-	1	1	2
Private sector pharmaceutical locations	13	-	5	5	13	-
Private sector medical surgeries	36	42	52	14	20	-
Specialised ambulatory	-	-	-	1	1	1
Private sector dental practices	35	24	27	24	27	19
Hospital ambulatories	-	-	-	2	2	2
Private sector medical laboratories	6	3	3	3	3	3
Public sector individual dental practices	-	-	-	23	8	12
Private sector dental laboratories	15	-	-	-	-	8
Public sector specialised medical surgeries	-	-	-	5	4	8
Private sector specialised medical surgeries	-	-	-	50	52	29
Private sector family medicine surgeries	-	-	-	-	13	22
Private sector general medicine surgeries	-	-	-	-	5	-

I.3.3 Education

The education system has followed, primarily, the correlation of educational needs of our county with the possibility of schools to best satisfy the options for students and parents.

As such, the education system has been restructured based on a minimum curriculum of 10 years, and an additional 2 years for a specialisation. This way, if the pre-primary, primary, and middle school levels have not been modified, then the high school and professional levels will be unified for a significant number of students who will finish high school. These include students graduating on the theoretical, technological, vocational, or professional streams for years 9 and 10 of study.

During the academic year 2004-2005, there were 38 independent education entities, namely:

- 12 independent kindergartens;
- 14 schools teaching years I- VIII;
- 1 vocational school;
- 11 high schools and school groups;

The high school network in Tulcea Municipality has increased through the establishment of the monachal section of the Theological Seminary.

In the primary and middle education, new classes have been established for Rroma, as well as special education classes for those who have passed school age.

Jobs and specialisations have diversified to meet the demand of the development of the region.

For disabled children, there have been two SAM classes established.

During the academic year 2004 – 2005, 42,75 students and children have been included in the state-funded educational system, as follows:

Level of education	TOTAL	Urban	TULCEA	Rural
Pre-school	8021	3777	2584	4244
Primary	10960	5160	3384	5800
Middle school	12188	6242	4326	5946
High school	7495	7355	5831	140
Professional + S.A.M.	3943	3226	2482	717
Special	168	119	81	27
TOTAL	42775	25879	18688	16896

The school-age population of Tulcea County includes 42,607 students and pre-schoolers. They are distributed as follows, from an educational perspective:

Registered students, county population, and inclusion rate for pre-university education

Level	Children/registered students				Current population				Inclusion rate 2004-2005		
	Total	Urban	Tulcea	Rural	Total	Urban	Tulcea	Rural	Total	Urban	Rural
Pre-school	8021	3777	2584	4244	10412	4602	3148	5810	77.03%	82.07%	73.04%
Primary	10960	5230	3384	5730	12215	5352	3462	6863	89.72%	97.72%	83.49%
Middle school	12188	6360	4326	5828	13796	6886	4684	6910	88.34%	92.36%	84.34%
High school	7495	7355	5831	140	18539	11876	9415	6663	33.25%	61.93%	2.10%
Prof./SAM.	3943	3226	2482	717	17000	8900	6849	8100	23.19%	36.24%	8.85%
Total	42607	25948	18607	16659	71962	37616	27558	34346	59.20%	68.98%	48.50%

With regard to the distribution by residential means, the following becomes evident:

- Due to the extension of the “milk and bread” program, the inclusion rate increased for children at the pre-school level;
- Due to efforts to educate children who have passed school age, especially for Roma and due to the implementation of these classes especially in urban areas, the inclusion percentage reaches 97.72%, higher than the rural figure;
- In high school education, the inclusion level is 88.34%, and 92.36% for Tulcea Municipality, which indicates a school leaving percentage of 4.32%, despite the implementation of recuperation classes, especially for Roma;
- In post-middle school education, there is a higher inclusion of students from urban areas, heavily female, and especially at high school level.

With regards to the number of students per class, the situation is as follows:

Type of education	Level	Total
Normal	Pre-school	21.50
	Primary	18.06
	Middle school	20.52
	High school	27.45
	Prof/SAM	25.28
	Total	21.28
Special	Pre-school	6.00
	Primary	6.25
	Middle school	7.33
	High school	0.00
	Professional/SAM	10.00
	Total	7.18

The enrolment of 6 year olds into grade I is as follows: 1682 children aged 6 years and older, included in the preparatory and eldest kindergarten groups, indicate a large number of children reaching grade I.

In order to reduce the rates of school abandon in the primary education system and to have a better inclusion of children into pre-school education, efforts are being made both by teachers as well as by directors and inspectors to motivate education, and also by the Ministry of Education and of local and central administrations for social and economical motivation (i.e. programs such as “milk and bread”, state allowances for students, program for the distribution of school supplies, scholarships, donations, sponsorships, etc).

Private sector educational entities

The only private sector educational entity active in Tulcea during the academic year 2003-2004 was organised by the Danubis Foundation. This included Tulcea Private High school No 1, which has a theoretic profile, specialises in philology, and teaches 88 students distributed 14 in grade IX, 32 in grade X, 25 in grade XI, and 17 in grade XII.

Groups and classes with a Step-by-Step program function in a state-funded environment, and have their own locations. As they are state funded, school programs and the lesson plans are those provided by the M.Ed.C.

The development of schedules and programmes is carried out based on education documents appropriate for state education. These are provided by ISJ.

The “Step by Step” alternative education currently includes 15 pre-school entities, which include 37 kindergartens (906 pre-schoolers), and 6 groups in the “Early Education” day-care centre, with UNICEF assistance (150 children), with coverage of 11.52%.

Children’s palaces and school clubs

The Children’s Palace in Tulcea has 23 sections, with 28 activities of which 11 are cultural-artistic, 9 are technical-scientific, 1 sporting-tourist. 1500 students are enrolled.

The table below outlines the number of activities and number of students who attend clubs in the Children’s Palace in Tulcea:

	Area/ No of clubs	Unit	Activity	Number of enrolled children
1	Cultural artistic 10	Children’s Palace - Tulcea	Folkloric ensemble, ballet, modern dance – rhythmic gymnastics, fine arts, TV / radio reporting, tapestry / ethnology, modern music / instrumental, theatre / writing, French civilisation and culture, folk music band	800

2	Applied technology Scientific 9	Children's Palace - Tulcea	Computer programming, ecology, dendrology / forestry / ornithology, study of flowers and vegetables, landscaping Apiculture, constructions, electronics, automatisations, astronomy – spelology, cinematography and photography Go-carting / driving school Ecology	400
3	Sports / tourism 2	Children's Palace Tulcea	Judo, chess, eco-tourism	300

Students studying abroad

24 students have requested the release and authentication of their academic records in order to continue their studies abroad, the majority for Spain and Italy.

Medical and dental units in educational entities

During the academic year 2004-2005, medical assistance for students and pre-schoolers improved through the establishment of new medical and dental units in schools.

Medical units in schools

	No of medical units in schools	No of medical surgeries	No of doctors	No of staff	Emergency norm YES / NO
Tulcea	7	9 in schools 7 in kindergartens	7	21	YES

New areas adjacent to schools which are appropriate for building medical practices will be identified, and ISJ Tulcea will support the establishment of new school medical units to help the current situation where one medical unit services 2-3 schools, and to improve student access to medical care.

Dental units

Area	No of units	No of doctors	No of staff
URBAN	7	2	1
RURAL	0	0	0

At School No 2 in Tulcea, there are dental professionals.

There are 26 dental doctors with individual practices who have been contracted by CAS Tulcea, and who provide free dental care to children of school age.

An analysis of the education system and the management of resources show the following strong points and weak points in the activities of ISJ during the academic year 2004 – 2005:

<p>Strong points:</p> <ul style="list-style-type: none"> - Qualified staff, or staff in the process of getting their qualification; - Monitoring of schools which had poor results; - Development of infrastructure for all schools; - Provision of computers in all high schools and the simultaneous education of teachers and staff in how to use educational software; - Local and external partnerships; - Initiation of monitoring programmes for material and financial resources, the establishment of a bank for the School Inspectorate; - Establishment of an educational centre which provides schools with guidance, best practice manuals, and professional development for project implementation; - Good collaboration with the Police and Constabulary for students' safety in and around schools. 	<p>Weak points:</p> <ul style="list-style-type: none"> - Insufficient kindergartens – lack of coordination with the increasing birth rates and the number of pre-school units; - Inadequate use by school management of financial resources provided by City Halls; - Conservative staff not open to using modern and efficient teaching methods; - Small number of schools accredited for professional development, or which provide professional courses; - Inefficient management of human and material resources in some schools; - Teachers who do not know how to use computers, and do not even take the initiative to learn.
<p>Opportunities:</p> <ul style="list-style-type: none"> - Counselling for students quitting school, and for their parents; - Programmes for the recovery of students quitting school, in partnership with the Police; - Clothing and school supplies collections, in partnership with the church, economic entities, other educational entities, for students from poor homes; - Distribution of school supplies to students from homes with low incomes; - Monitoring of children abandoned by their families and placing them in foster homes, in partnership with the General Department for Social Assistance and Child Protection; - Implementation of programmes teaching Roma how to read (50 children and youth); - An increased number of part-time courses for middle schools, in School No 7 in Tulcea; - Improved infrastructure through timely investments; - An increase and diversification in schools offering professional qualifications; - Closer collaboration with the Tulcea County Employment Agency, who can be an ideal partner in providing federal funding for professional conversion courses. 	<p>Threats:</p> <ul style="list-style-type: none"> - Lack of funding; - Lack of managers; - Students following their parents and moving abroad, and finishing their studies there; - Lack of solutions for identified problems; - Weak effort on the part of some teachers in preparing students for final exams; - Lack of interest of some economic entities in the professional development of their employees, even if they have tens of unqualified workers (or qualified in other domains), with legislation allowing them to employ an unqualified work force

I.3.4 Social Assistance

The development and diversification of services which meet the needs of poor families and persons, who have no or very small incomes, disabled, unemployed, pensioners, the elderly and other disadvantaged social categories, is necessary for the independence and dignity of these persons. These services must be provided in a professional and friendly manner.

The babysitting and care services offered by day-care centres in Tulcea Municipality have seen an increase in the number of children during 2006 by 23.13% compared to 2005, by 35.54% compared to 2004, and by 116.97% in 2003. As such, there has been an over-use of the day-care system, due to improved services and child education as well as due to an increase in birth rates.

CHILDREN IN THE DAY-CARE CENTRE	2004	2005	2006
DAY-CARE No. 1	6,496	7,994	9,168
DAY-CARE No. 3	8,122	9,144	10,916
DAY-CARE No. 6	8,465	8,271	11,202

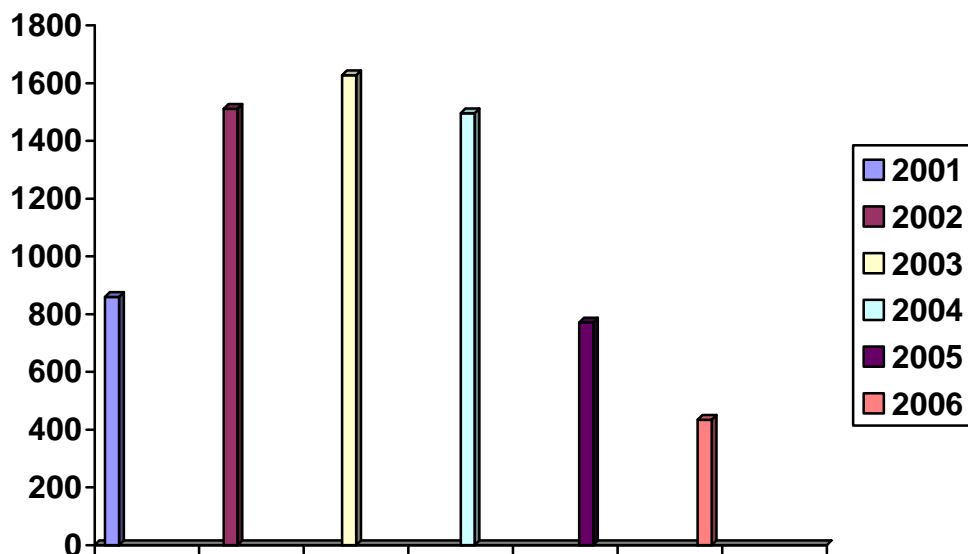
The following social services are offered through the public service for social assistance in Tulcea Municipality:

		2004	2005	2006
Social aid	Number of files	566	317	185
	Number of beneficiaries	1496	771	434
	Sum paid (thousands ROL)	9,902,772	753,082	454,965
Assistance for heating of homes with wood, coal, oil for the beneficiaries of Law No. 416/2001 regarding guaranteed minimum income	Number of files	518	338	192
	Sum paid (thousands ROL)	1,105,503	80,736	45,994
Emergency assistance	Requests made	131	75	57
	Requests approved	124	11	7
	Sum paid (thousands ROL)	493,300	9,230	9,750
Burial assistance	Requests made	11	2	5
	Sum paid (thousands ROL)	11,877	177	460
Allowances for newborns	Requests made	755	746	795
	Sum paid (thousands ROL)	1,057,000	144,974	155,025
State allowances	Requests made	836	895	902
Complimentary family allowances	Requests made	458	212	142
Allowances for single parent homes	Requests made	514	461	346

Powder milk	Children	362	450	283
	Boxes	26,571	29,661	18,662
Child rearing allowances	Requests made			1,482
Child rearing incentives	Requests made			131
Food provision in the social assistance canteen	Number of persons	407	336	365
Elderly with homecare	Number of persons	8	24	33
Disabled with personal assistants	Adults	72	82	96
	Minors	77	80	74
	Sum paid (thousands ROL)	7,740,661	976,914	1,211,007
Disabled receiving monthly allowances	Adults	54	81	124
	Minors	19	20	24
	Sum paid (thousands ROL)	2,060,476	315,618	535,572
Urban public transportation monthly season tickets for gravely disabled persons, and for their assistants	Number of season tickets	499	541	535
	Sum paid (thousands ROL)	1,675,417	223,455	246,170
Day-care centres for children	Number of children			16

When making a comparison between 2006 and previous years, it becomes apparent that the number of persons receiving social assistance has decreased. As such, in 2006 compared to 2001, the number of those receiving social assistance decreased by 49%, by 71% compared to 2002, by 73% compared to 2003, by 70% compared to 2004, and compared to 2005, the number of those

receiving social aid decreased by 43%. This decrease in the number of persons receiving social assistance is primarily due to the following reasons: people retiring at the maximum age, the classification of different types of disability, death, requested retirement, acceptance/refusal of jobs, additional incomes through working abroad and through seasonal work.



The identification and analysis of the needs of the population was carried out at two levels:

- Identification of needs from the point of view of those receiving social aid;
- Identification of the needs of persons in target groups based on the opinion of specialists.

The two methods were carried out through individual interviews.

The problems and needs of the elderly include:

- Loneliness;
- Not enough money;
- Expensive medication (compensated prescriptions are not respected; limited access to better quality medication);

- Poor nourishment (diets which need to be followed because of various illnesses are costly);
- Obtaining prostheses (for those who are immobile – need to travel, and for others – hearing aids, purchase of eye glasses);
- Need to have a companion permanently, especially for those who are immobile;
- No home;
- Safety in the streets;
- Problems with transportation;
- Aid in the purchase of household spare parts;
- Social problems: generational conflicts, lack of interest on the part of the authorities, corruption, not respecting one's rights, deficiencies of the system, such as the professionalism of persons, lack of respect for the elderly.

Problems of homeless children:

- Need of a home;
- Need to integrate children into families, or to institutionalise them;
- Need for counselling / assistance;
- Need of specialist care;
- Need of food and emergency aid;
- Need of emergency shelters;
- Inability to go to school, due to social needs;
- Need of basic medical care;
- Need of identity papers, and support in obtaining them.

Problems for the disabled include:

- Inadequate means of transportation;
- Insufficient community services;
- Lack of homes for adults with small disabilities, who can be in the situation where they are no longer accepted by their families, or who have no families;
- Prejudices throughout the community regarding disabled persons;
- Lack of jobs for those capable of working;
- Lack of education of personal assistants;
- Social problems: indifference on the part of the authorities, corruption, not following the law, not allowing basic rights.

Problems and needs of poor families:

- No home;
- Inadequate living conditions;
- Small or no incomes;
- Need for food and emergency assistance;
- Inadequate nourishment due to lack of funds;
- Children unable to attend school because of a lack of necessary resources;
- Children quitting school because the parents do not provide the required attention or they are uninterested;
- Lack of jobs;

- Expensive medication (compensated prescriptions are not respected);
- Need for social and medical care;
- Social problems: indifference on the part of the authorities, corruption, not following the law, not allowing basic rights.

Needs for homeless persons:

- Need for homes, social homes;
- Need for emergency shelters;
- Need for identity papers and for help by the local community in obtaining identity papers;
- Need for food and emergency assistance;
- Need for basic medical care and assistance;
- Need for a monthly income;
- Need for administrative / institutional representation;
- Social needs.

Needs of the ethnic Roma population:

- Small or no incomes;
- Poor living conditions (small square footage for each person);
- Type and size of families (large families);
- Small number of children enrolled in schools (kindergartens, primary and middle schools);
- Reduced access for children to required levels of education;
- Need for food and emergency assistance;
- Poor nourishment due to lack of material resources;
- Inability of children to go to school because of lack of material resources;
- Children quitting school due to parents' lack of interest;
- Need for identity papers, and support by the local community in obtaining identity papers;
- Need of basic medical assistance;
- Need of administrative / institutional representation;

- Reduced public facilities (drinking water, electricity, sewage, etc);
- Social problems.

It is a priority for Tulcea Municipality to diversify the social services provided, for all social categories – disabled, the elderly, children, women, victims of domestic violence or of human trafficking, and to provide services to meet needs, eventually reducing the degree of dependence.

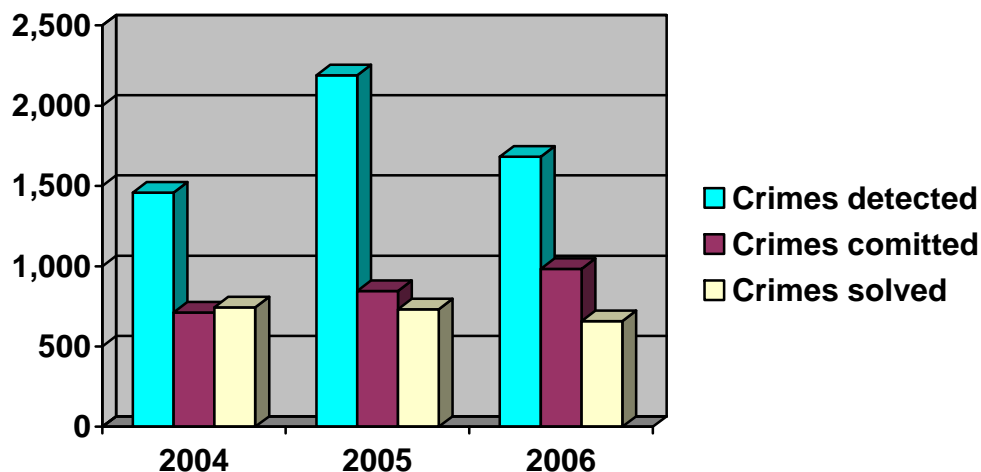
I.3.5 Public Order and Safety

In Tulcea Municipality, safety and public order is provided by the Tulcea Municipal Police, by the

Tulcea County Constabulary Inspectorate, and by the Tulcea Community Police.

In accordance with the Strategy for the Modernisation of Romanian Police, the prime objective of the Municipal Police in 2006 was to improve crime fighting, improved operations and judicial system, professional activities, as well as consolidating relationships with the civil society, with public institutions, and with other entities with abilities to prevent crime and ensure public safety.

In 2006, there has been a decrease in criminal activity, with 1,621 detected crimes (-28.4%), compared to the same period of the previous year, when 938 infractions were detected (16%) and 658 cases were solved.



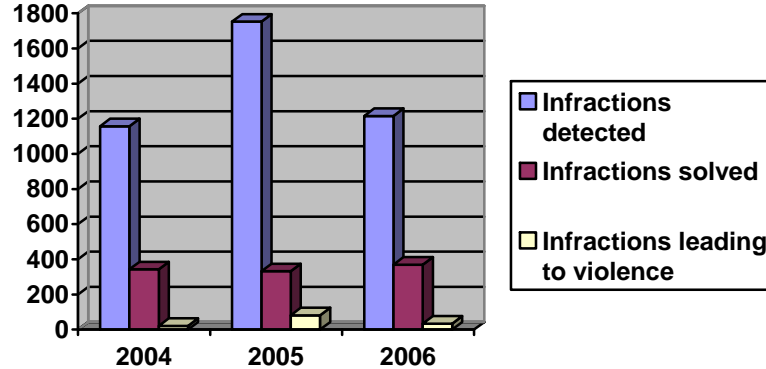
Criminal infractions have decreased by 35%, with a significant increase in this type of infraction being solved, namely from 332 to 369.

Also, significant decreases have been noted in violent crime, and the percentage of these crimes, which are solved, is increasing.

Crime		2004	2005	+/-	2005	2006	+/-
	Infractions detected	1,157	1,752	+690	1,752	1,215	-537
	Infractions solved	343	332	-11	332	369	+37
	Violent crime	21	81	+60	81	34	-47
	Percentage of detected infractions	31.4	22.3	-9.1	22.3	30.9	5.3

Indicators regarding fighting crime show a static situation, which illustrates that during the analysed period there were 983 crime detections, with an increase in judicial crime (+7%), an increase in financial / economic crime by 53%, as well as other types by 53%,

and the obvious detections increased by 40%. A statistical analysis of these numbers by type of infraction shows that crime against individuals increased by 24.4%, sexual crime increased by 2.2%, and public disorder increased by 8.6%.



Public disorder is high, as follows:

Type of disorder	2005			2006		
	Detected	Reported	Solved	Detected	Reported	Solved
Thefts from homes	19	87	54	104	70	49
Thefts from commercial entities	130	63	49	153	72	80
Thefts from cars	109	70	47	87	42	38

There has been a significant increase in thefts from commercial entities, mostly due to a lack of proper security systems, as well as a lack of protection.

Thefts from homes remain at a high level, due to the fact that preventative measures have not been efficient.

With regards to thefts from cars, these were carried out during the summer season, when there was an influx of tourists and parking lots were not properly managed.

Violent crime:

	2005	2006
Detected	80	30
Reported	55	45
Solved	40	38

The Community Police Department provides the following services:

- Guarding of locations which belong to Tulcea Local Council = 5
- Guarding and patrolling of departments in Tulcea City Hall = 10
- Guarding, monitoring, and intervention for other judicial persons = 13
- Overseeing the transportation of valuables = 5

There are 29 agents on duty in the service on a daily basis.

I.3.6 Tourism

Tulcea Municipality has several points, which are tourist attractions, and are specific to the city. The beauty and diversity of the view, and the richness and variety of archaeological points and historical monuments are unique to the county and the municipality.

The municipality's relief promotes the Northern Dobrogea slope, bordered by the Danube to the north, by the Colnicul Hora to the east, by the Lake Somova to the west, and to the south by an intersection between torrential valleys going towards the Danube, and the valleys pointing south.

Tourism is oriented in three main areas:

1. *Scientific tourism in the Danube Delta*, for those who wish to collect scientific information;
2. *Historical tourism*, for those who wish to visit archaeological sites;
3. *Tourism for groups in the Danube Delta*, for those who wish to admire the natural

beauty of this region.

In Tulcea, there is a Research Institute for Ecology, which includes 4 museums:

- "Danube Delta" Natural History Museum;
- Museum of History and Archaeology;
- Art Museum;
- Museum of Ethnography and Folklore.

The "Danube Delta" Natural History Museum (14 Progresului Str), also known as the Danube Delta Museum, has the most important species of flora and fauna which are specific to the ecosystem in the Danube Delta Biospheric Reservation. This is why it is recommended that tourists visit this museum before going into the Delta. The main attraction is in the basement: the aquarium that, aside from fish, reptiles, and invertebrates specific to this region, also have some curiosities from the Atlantic and Indian Ocean.

The Museum of History and Archaeology (Monumentul Independenței Park, Gloriei Str) is located on one of the hills in Tulcea. The park has its name after the Independence Monument, which was erected to honour the heroes of the War of Independence. Through its displays, the museum takes a trip from antiquity to the medieval era of the history of North Dobrogea. It displays a rich archaeological heritage (nearly 90,000 archaeological artefacts, numismatic and epigraphic), organised by collections: ceramics, bronzes, sculptures and epigraphic decorations, Christian and pagan objects, numismatics. The previously mentioned monument was built in 1899, and the obelisk was created from Bavenno granite (22m tall) in a stone workshop in Milan, and the bronze statues (Dorobanțul and Vulturul - 5m tall) were made in a workshop in Venice.

The Tulcea Art Museum (2 Grigore Antipa Str) is located near the Danube's bank. It has art collections, engravings, and contemporary sculpture, and has an exceptional collection of interbellic avant-garde art signed by Romanian artists such as: Gheorghe Petrașcu, Nicolae Tonitza, Theodor Pallady, Nicola Grigorescu, Frederic Storck, Ion Jalea, Oscar Han, Victor Brauner – the most important collection of paintings in the country.

The Museum of Ethnography and Folklore (4, 9 Mai Str). Over the course of the year, the museum houses numerous temporary exhibits on folk traditions specific to Dobrogea and to the entire country, and has a permanent collection of approximately 6,400 artefacts. These are split between the ethnography collection (agricultural and farming tools, fishing tools, army equipment, etc) and the folklore collection (household embroidery, decorative items, etc). The museum manages the Memorial House of the Dobrogean writer Panait Cerna, the Panaghia house in Babadag (a beautiful exhibit of oriental art) and the Dobrogea Village Museum in Enisala (a peasant household "in situ"). This last exhibit includes the house and some annexes, typical for a household from this region: animal enclosure, a shed, and kitchen with oven, cote, and a well.

Across the road from the Danube Delta Museum is the St. Nicolae Cathedral, a monument of Romanian architecture, which was erected during the Ottoman occupation (1865). This is the only Orthodox Church in the entire territory of the Ottoman Empire, which was permitted to have taller spires than the mosques. The St. Gheorghe church was also built during the Ottoman occupation. It stands out due to its embellished style, with oriental architectural elements.

The Culture House, County Library, and the Fine Art Galleries are also located on the town's main road.

The Civic Square (built between 1970-1972) is a large, beautiful square, with marble plaques and fountains, and serves as a resting spot for locals and visitors alike. In the centre of the square there is a statue of Mircea cel Bătrân, sculpted by Ion Jalea. The monument, made of bronze, was erected in 1973.

Within Tulcea Municipality City Hall, there is a Centre for Tourist Information; its primary objective is to inform tourists with regards to:

- Tulcea – town, and Danube Delta;
- Tourism entities in the city and in Tulcea County;
- What these entities offer;
- Daily trips by boat into the Danube Delta;
- Walking routes in Tulcea County;
- Weather forecasts for the city and for Tulcea County;
- How and where to obtain entry permits into the Danube Delta Biospheric Reservation;
- Approved fishing areas;
- Approved tourist routes;
- Access areas for tourists and forbidden areas;
- Fishing and hunting season;
- Flora and fauna in the Danube Delta;
- Camp grounds;
- Restaurants, terraces, clubs in Tulcea;
- Tulcea museums;
- Monasteries in Tulcea County;
- Tourist highlights in Tulcea County.

The Tulcea Tourist Information Centre collaborates with tourism operators, and the following institutions: ARBDD, INCDD, ICEM, in order to have all necessary information regarding tourism in Tulcea County.

Also, the Centre informs tourism operators regarding potential events and tourism fairs which

are held in the country and abroad; it collaborates with various societies, national and international foundations, in order to organise events, tourism fairs (national and international); distributes the necessary information to the interested parties for the creation of tourist guides.

The main tourism indicators for Tulcea Municipality are best illustrated in the table below:

Tourism	2001	2002	2003	2004	2005
Accommodation units – total number	12	11	15	22	21
Places in accommodation units – total number	1167	926	1038	1115	1174
Hotels - number	8	7	9	11	10
Places in hotels - number	793	554	645	704	776
Inns, motels - number	1	1	1	1	1
Places in inns, motels - number	21	21	16	16	20
Cottages - number	-	-	1	1	1
Places in cottages - number	-	-	6	6	6
Student camp grounds - number	1	1	1	1	1
Places in student camp grounds - number	308	300	300	250	167

Hotels in Tulcea Municipality:

4 star hotels:

Rex Hotel - 38 rooms, 76 places;
Esplanada Hotel– 104 double rooms, 4 apartments.
Pelican Hotel - 7 rooms, 18 accommodation places;

3 star hotels:

Delta Hotel– 115 rooms, 234 places in apartments, single or double rooms;
Select Hotel - 42 rooms;
Atlantis Hotel - 30 rooms, 2 apartments, 3 suites
Egreta Hotel - 98 single rooms, doubles and apartments;
City Hotel– 18 double rooms, 5 single rooms;

2 star hotels:

Europolis Hotel - 53 single rooms, double, apartments, 100 places;
Albastră House - 19 rooms, 44 places;
Europolis Tourist Complex - 32 places;

Pensions:

Egreta Albă Pension – 20 double rooms, 40 places
Anda Pension– 5 rooms, 10 places;
Apromat Pension - 10 places;
Watergate Pension - 4 rooms;
Delta Cris Pension - 6 rooms, 24 accommodation places

I.3.7 Sports

<p>The current infrastructure in Tulcea Municipality</p> <ol style="list-style-type: none">1. Sports gymnasia: Agricultural High School, Anghel Saligny High School, Economic High School, Henry Coandă High School, Grigore Moisil High School, Alimentar High School Multifunctional Hall of Tulcea Municipality Polyvalent Hall of the County Sports Department School Sports Club Gymnasia in schools: Spiru Haret, School No 4, School No 10, School No 11, School No 122. Sports grounds: Delta Stadium Syndicates Stadium Bididia Stadium3. Accommodation for athletes: Casa Albastră Hotel School Sports Club Headquarters of the County Sports Department (currently being developed)4. Sports structures<ul style="list-style-type: none">- Public access – 3- Private access – 65- No judicial type – 55- County associations by sport (track and field, basketball, football, handball, chess, sports for all)5. Sports traditionally strong in Tulcea<ul style="list-style-type: none">- Rowing- Volleyball - men- Football	
<p>Strong points: Complex infrastructure; Experience and strong performance of Tulcea athletes at national and international level.</p>	<p>Weak points: Old sports infrastructure; Current facilities are old or non existent; Restoration programmes in Tulcea are insufficient.</p>
<p>Opportunities: Improved infrastructure through timely investments; Establishment of new and modern recreation frameworks; Establishment of associations by sport type.</p>	<p>Threats: Lack of funding; Lack of managers.</p>

I.3.8 Mass-media

<p>Press</p> <ul style="list-style-type: none">- Print: Newspapers: Acum, Delta, Obiectiv- Audio-visual: Radio: Radio Argus, Radio Delta, Radio Pro Amis (Radio 21, Kiss FM) Television: TV Cony Sat, Electron M Bit	
<p>Strong points: In permanent contact with the citizens of Tulcea; Diversified materials; Permanent analyses regarding Tulcea Municipality.</p>	<p>Weak points: Small number of journalists; Lack of a television station for the municipality; Weak published materials.</p>
<p>Opportunities: Establishment of local television station; Creation of brochure dedicated to the local public administration; Establishment of a media centre for the professional development and attraction of young journalists.</p>	<p>Threats: Lack of funds; Excessive policing of the press; Lack of interest of the youth to become journalists in the Tulcea press.</p>

I.4 OBJECTIVES

There are 6 prime directions for the implementation of sustainable development:

- City infrastructure and public services;
- Education and culture;
- Infrastructure and information technology;
- Environmental and natural resource protection;
- Inter-community cooperation;
- Partnerships with civil society and with economic entities.

I.4.1. General Objectives

- Environmental protection;
- Economic development;
- Urban regeneration;
- Social protection.

I.4.2 Specific Objectives

I.4.2.1 Objectives for Environmental Protection

No.	Objective	Sub-Objective
1	Natural resources and conservation of biodiversity	<ul style="list-style-type: none">• Intervention and protection of trees and species, especially for scientific interest;• Promote tourism and eco-friendly leisure activities;• Protection and development of forest ecosystems; adequate use of Lake Ciuperca;
2	Urban ecology	<ul style="list-style-type: none">• Following the urban Regulations regarding the maintenance and development of green spaces;• Decreasing pollution in residential areas through the establishment of belt roads, restrictions on access of large vehicles, and establishment of protective borders;
3	Atmospheric protection	<ul style="list-style-type: none">• Reduced air pollution for improved air quality and therefore improved health;• Good air quality to ensure human and environmental health, by reducing pollution caused by transportation and roads;• Good air quality to ensure human and environmental health, through the reduction of asphalt preparation centres;
4	Protection of surface and subterranean waters	<ul style="list-style-type: none">• Development and modernisation of drinking water distribution in Tulcea Municipality;• Improved technology for the sewage treatment plant;• Maintenance of water pockets in the municipality;• Identification and elimination of the release sources of wastewater directly into surface waters;

5	Soil protection	<ul style="list-style-type: none"> • Environmentally friendly reconstruction of the existing landfill; • Reconstruction of areas degraded by landslides or erosion in the Bidida area;
6	Waste management	<ul style="list-style-type: none"> • Implementation of a local plan for waste management; • Establishment of a landfill near Tulcea Municipality; • Implementation of a system for selective waste collection and recycling in the municipality; • Decrease in the amount of waste;
7	Education and community activities	<ul style="list-style-type: none"> • Increased capacity of the public to make decisions; • Public access to environmental information, in order to inform them about environmental issues and to create a civic attitude; • Distribution of eco-volunteer certificates for persons who are environmentally friendly; • Organise events to mark major environmental protection developments – international, national, or local;
8	Information system for the environment	<ul style="list-style-type: none"> • Collection of environmental information; • Modelled dispersion of atmospheric pollution sources; • Evaluation of the quality of environmental factors; • Evaluation of high-risk situations.

I.4.2.2 Economic Development Objectives

General Objectives

- Economic development in line with European Union tendencies, respecting sustainable development;
- Modernised transportation infrastructure;
- Modernisation and extension of technical networks in the city, to increase economic activity;
- Improved business environment to attract foreign investments.

- Improved animal farms and related technologies;
- Promotion of organic agricultural products, in line with European Union standards;
- Development of small and medium enterprises which process agricultural products;
- Development of the business environment for agricultural agents.

Agriculture

- Trend towards agriculture which has profitable and highly performing private mechanisms;
- Establishment of family farms, formed through the acquisition of agricultural areas;
- Modern, highly performing technical infrastructure;

Industry

- Attract investments by providing local facilities;
- Support SMEs active in the production and services sectors, in order to decrease production and services costs;
- Support existing enterprises which live up to the competition specific to the international market economy;

- Improved business environment by stimulating SMEs, and improved communication and access to information;
- Diversification of credits offered to SMEs;
- Establishment of public-private partnerships for economic development;
- Completion of the privatisation process of state enterprises;
- Attract foreign capital through the local authorities providing facilities for investors;
- Promotion of economic potential and local business opportunities.

Commerce and Services

- Modernisation of street commerce and of main food markets;
- Attract major wholesale and retail commercial entities with better quality products, at competitive prices;
- Improved quality and professional qualifications in commerce and services;
- Support the development of services in tourism;
- Maximise tourism potential and services offered in this area;
- Diversify commerce and services, and improve their quality.

I.4.2.3. Urban Regeneration

Infrastructure

- Restoration, extension, and modernisation of the city's technological infrastructure (drinking water, sewage, electrical energy);
- Increased efficiency and quality of public services and management;

- Improved transportation infrastructure to connect the municipality to national and European centres;
- Development of road network and of urban communications.

Constructions, lands

- Development of the real estate sector, reform in urban planning;
- Improved living conditions, especially for youth.

Cultural Heritage

- Protect cultural and historical values of the municipality;
- Promote cultural and historical values at national and international level.

I.4.2.4. Social Objectives

Health

General objectives (at national level):

- Increased birth rates;
- Increased life expectancy;
- Decreased death rates;
- Improved quality of life;
- Efficient health system;
- Equal access to healthcare.

Specific objectives:

- Improved functioning of existing hospitals, including emergency and permanent services;
- Modern medical equipment for healthcare units, in order to improve and diversify services offered;
- Necessary equipment for school medical offices and an increase in the number of these offices, to meet the needs of the school population;
- Permanent supervision of environmental risk factors and of the population which is exposed to various toxins, in order to prevent disease;
- Provision of public services related to personal hygiene for the population of the entire town – access to good quality drinking water, and in sufficient quantities;
- Encourage privatisation in the medical system;
- Concentrated local effort in family planning and children's health;
- Diversification of the activities of the Health Education Office within the Public Health Department, by involving NGOs and local media, in order to improve the education of the population regarding the risk factors of smoking, alcohol, drugs, and inactivity;
- Development of the internet system in the Public Health Department and in local hospitals, in order to be able to make online purchases of supplies;
- Involvement of local communities in order to attract funds.

Culture

- Making most value of the fine arts collection, through exhibitions of the works of local artists;
- Increased use of open space for various activities aimed at conserving folkloric traditions;

- Restoration of the open air theatre in Civic Square, for occasional shows and events;
- Book exhibitions, festivals, symposia for Tulcea personalities;
- Permanent development of the book collection of the County Library and of a computerised database;
- International promotion of local cultural personalities, through various programs and actions;
- Continued restoration works on national monuments;
- Improved conditions for the ongoing implementation of traditional cultural events – festivals and folklore contests, music, theatre, literature;
- Support the activity of traditional craftsmen and encouragement of children to preserve traditional values – traditional dances and songs, pottery, weaving.

Education

- Professional and cultural school management;
- Improved conditions for pre-school, school, and high school education by:
 - Providing the necessary funds for the functioning of schools under adequate conditions, from the local budget and from other sources;
 - Allocating funds for building repairs, façade restoration, and courtyard management;
 - Establishing sports grounds, building gymnasiums in schools, as well as providing the existing ones with the necessary equipment.
- Active measures to eliminate school quitting and to reduce the number of children who have already quit school;

- Support the activities of the Children's Palace;
- Introduce and implement IT education on a large scale;
- Encourage the involvement of youth in community activities;
- Encourage the involvement of students in educational, sporting, and work related activities in view of their environmental education and integration into society;
- Transformation of Tulcea Municipality into a strong university centre by:
 - Supporting existing specialisations and creating the demand for new academics, who will attract students from the entire area;
 - Increasing the number of students, the number of professors, and improving the quality of teaching.
- children quitting primary and middle school;
- Improved and diversified support for disabled persons, through:
 - Specialised services for homecare or for care centres;
 - Improved family mobility / temporary residence centres / long term residential facilities.
- Provision of minimum conditions for disadvantaged persons;
- Opportunities for youth who exit the state foster care system at 18 years of age, in view of integrating them into a normal social life, by:
 - Providing access to social housing;
 - Providing employment counselling;
 - Emphasizing crime prevention;
- Promoting volunteer services in social assistance;
- Protection and support services for young single mothers, to avoid child abandonment;
- Quick housing solutions for young families with small incomes.

Social Protection and Workforce

- Access to social assistance for all categories of the population;
 - Improved quality of social services and an easy to access system;
 - Reduced social exclusion through:
 - Civil integration, with equality between citizens in a democratic system;
 - Economic integration, with the availability of jobs;
 - Social integration, and access to state funded services;
 - Interpersonal integration, which implies belonging to a family, a group of friends, of neighbours, and access to interpersonal networks which provide moral support to those who need it;
 - Access to education for all children, and a reduction in the number of
- The main objectives in order to increase employment are:
- Sustained economic development, with a direct impact on the number of jobs, based on the development of the SME sector;
 - Not allowing illegal labour;
 - Promote measures for the prevention of unemployment for youth, in order to increase employment rates in this sector;
 - Identification of ways to employ the free work force, as a part of the ongoing process of privatisation and economic restructuring;
 - Development of specialised programs aimed at disadvantaged persons in order to integrate them into the work

force: youths, disabled persons, Roma, etc.

In order to prevent and cure long term unemployment, the unemployed will be registered in educational and career counselling programs, as a part of the specialised programs offered by the County Employment Agency. The aim is to identify the best measures, which will lead to the employment of these persons within 12 months of unemployment;

- Improved services for those looking for work;
- Adapt the educational supply to meet market demands, and stimulate the movement of the workforce to stabilise the balance between workforce supply and demand;
- Increased number of indicators related to the workforce (especially those which characterise the potential for work), by developing and modernising the informational system on the job market;
- Improved job databases to include all existing jobs on the market;
- Organisation of job scholarships, to establish contracts between employer and employee.

Cults

- Completion of construction works in churches which are being built;
- Restoration and consolidation of some churches in the municipality.

I.4.3 Strategic Principles

The formation of the strategy begins from the following principles:

- The strategy must improve the living conditions of the citizens (homes and jobs);
- The strategy must increase the quality of the urban design, of constructions, services and image of the city;
- The strategy must offer opportunities for the intervention of the private sector in urban operations, either through direct investments or isolated projects, or through partnerships and permanent consultations between partners;
- The strategy must be built on the social character of urban processes, and on the support and participation of the community;
- The strategy must allow for a certain degree of flexibility to adapt to inevitable changes that take place in the municipality. For this reason, the planning process must be creative, participatory, and anticipatory.

II. LOCAL ACTION PLAN FOR TULCEA MUNICIPALITY

II.1 GENERAL OBJECTIVES

There are 6 prime directions for the implementation of sustainable development:

- City infrastructure and public services;
- Education and culture;
- Infrastructure and information technology;
- Environmental and natural resource protection;
- Inter-community cooperation;
- Partnerships with civil society and with economic entities.

I.4.1. General Objectives

- Environmental protection;
- Economic development;
- Urban regeneration;
- Social protection.

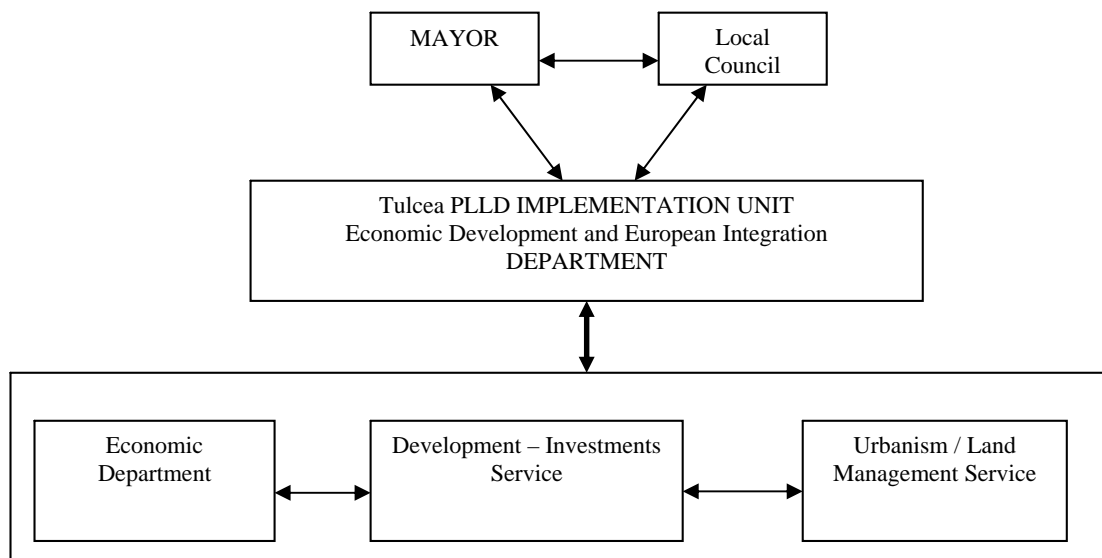
II.2 FINANCIAL PROTECTION

II.3. INSTITUTIONAL STRUCTURES FOR MONITORING AND EVALUATION

The monitoring and evaluation system for the implementation of the Local Action Plan in Tulcea Municipality:

As a measurement and evaluation instrument for the implementation process of the Strategy for Sustainable Development and Local Action Plan, this structure will use a set of indicators built in such a way as to ensure that the following objectives are met:

- The correct evaluation of the sustainability of the socio-economic system in Tulcea Municipality.
- Performance measurement in meeting the established objectives within the Local Strategy for Sustainable Development and the implementation of the Local Action Plan.
- Correlation and adaptation of local policies with Local Agenda 21 components (objectives, policies, actions), as well as with documents adapted at the international level.



II.4. Specific Objectives and Identified Projects

Basic Infrastructure

Specific Area	Project Title	Scope	Estimated Value - ROL -	Length of Project	Responsible Entity and Partners
Water distribution and sewage networks	Transport pipe for the water treatment plant part +70, Tulcea Municipality	Water distribution to the population of Tulcea Municipality	3,800,000	3 years	Tulcea Municipality City Hall
	Restoration of water networks, Tulcea	Restoration of drinking water networks in Tulcea Municipality	3,200,000	3 years	Tulcea Municipality City Hall
	Restoration and equipment for the rainwater pumping station SP1-mum, Tulcea	Improvement of water pumping station	2,900,000	2 years	Tulcea Municipality City Hall
	Restoration of sewage networks, phase II, Tulcea	Restoration of household sewage networks to decrease wastewater residue and rainwater sewage, to avoid floods	6,200,000		Tulcea Municipality City Hall
	Elimination of uncontrolled floods of rainwater and household water into Lake Ciuperca, Tulcea Municipality	Implementation of SP rainwater SP I Restoration of the transport pipe for industrial wastewater	1,485,000	3 years	Tulcea Municipality City Hall

Public transportation	Refurbishment of Tulcea bus station	Restoration, improved capacity, and diversification of services offered in bus stations	-	2 years	Private investments
	Refurbishment of the auto park of the Tulcea Public Transportation	Acquisition of new means of public transportation	2,600,000	3 years	SC TRANSPORT PUBLIC SA and Tulcea Municipality City Hall
	Green Card	Implementation of electronic ticketing for the public transportation system of Tulcea Municipality	1,000,000	3 years	SC TRANSPORT PUBLIC SA and Tulcea Municipality City Hall
	Info-Trans	Implementation of an electronic route plan for all means of public transportation	500,000	3 years	SC TRANSPORT PUBLIC SA and Tulcea Municipality City Hall
Urbanisation and local infrastructure	General Urban Plan	Development of a new General Urban Plan for Tulcea Municipality, to meet the expansion needs of the city and to meet EU urbanisation standards	1,000,000	3 years	Tulcea Municipality City Hall
	New sidewalks	Restoration of sidewalks with new asphalt or pavement in Tulcea Municipality	700,000	2 years	Tulcea Municipality City Hall
	Restoration of Civica Square		2,000,000	1 year	Tulcea Municipality City Hall
Commerce and public nourishment	Restoration of the West food market		1,000,000	1 year	SC AGROPIETE SA and Tulcea Municipality City Hall
	Restoration and modernisation of commercial areas in the Fortuna Complex	Establishment of a new, modern complex open to buyers	180,000	1 year	SC AGROPIETE SA and Tulcea Municipality City Hall

Thermal energy	Replace central boilers with neighbourhood boilers for Tulcea Municipality		400,000	3 years	SC Energoterm SA and Tulcea Municipality City Hall
	Convert the Thermal Station CT33 in Tulcea Municipality from liquid fuel to gas		300,000	2 years	Tulcea Municipality City Hall
	Restoration of water heating system through module installation	Restoration of the thermal agent distribution network in Tulcea Municipality, to minimise losses and decrease costs	3,575,000	3 years	Tulcea Municipality City Hall
	Restoration of the primary thermal agent network between Penitenciar Tulcea and PT 23		625,000	2 years	Tulcea Municipality City Hall
	Transform the PT14 and PT43 stations into natural gas thermal stations		1,800,000	2 years	Tulcea Municipality City Hall
Education	Restoration of education entities		1,833,000	2 years	Tulcea Municipality City Hall
	Restoration of the canteen in the Pedagogic High School	Restoration of the canteen for improved performance	400,000	1 year	Tulcea Municipality City Hall
	Restoration of the gymnasium in General School No 4	Restoration of sports gymnasia	500,000	1 year	Tulcea Municipality City Hall
	Restoration of the boarding facilities in "Sf.Casian" Theological Seminary	Restoration of the boarding school	400,000	1 year	Tulcea Municipality City Hall

Social

No	Specific Objectives	Funding: City Hall Other Resources	Project Title	Estimated Project Value (EUR)	Time Period	Institutions /Departments Responsible	Partnerships	Monitoring and Evaluation
1.	Reduce exclusion	Tulcea Municipality Local Council; PHARE funding.	Day centre for the elderly	50,000	6 months	Tulcea Department for Social Assistance and Protection	Tulcea Municipality Local Council; County Council for the Elderly; County Pensioners' Union	Responsible institutions, partners and contracting authority
2.	Promote social inclusion of disadvantaged sectors of the population	Tulcea Municipality City Hall; S.C. « SPONDEO » S.R.L.Tulcea; PHARE funding.	Counselling and vocational training centre	30,000	12 months	Tulcea Department for Social Assistance and Protection; S.C. « SPONDEO » S.R.L.Tulcea.	Tulcea Municipality City Hall; « Noroc » Foundation; General Department for Social Aid and the Protection of Children; Tulcea County Employment Agency.	Responsible institutions, partners and contracting authority
3.	Improved quality of social services	Tulcea Municipality City Hall; S.C. « SPONDEO » S.R.L.Tulcea; PHARE funding.	Professional development for assistants of disabled persons	20,000	12 months	Tulcea Department for Social Assistance and Protection; S.C. « SPONDEO » S.R.L.Tulcea.	General Department for Social Aid and the Protection of Children; Tulcea County Employment Agency.	Responsible institutions, partners and Contracting authority
4.	Improved quality of social services	Tulcea Municipality City Hall; PHARE funding.	Restoration of social aid canteen	200,000	24 months	Tulcea Department for Social Assistance and Protection	-	Responsible institutions and contracting authority
5.	Promote social inclusion of disadvantaged sectors of the population	Tulcea Municipality City Hall; PHARE funding.	Social housing for disadvantaged sectors of the population	500,000	24 months	Tulcea Department for Social Assistance and Protection; Tulcea Department for Heritage Maintenance and Administration	Tulcea Municipality City Hall; « Noroc » Foundation; General Department for Social Aid and the Protection of Children.	Responsible institutions, partners and contracting authority

6.	Prevention and control of domestic violence	Tulcea Municipality City Hall; PHARE funding.	Centre for the prevention and control of domestic violence	80,000	12 months	Tulcea Department for Social Assistance and Protection	Tulcea Municipality City Hall; « Noroc » Foundation; General Department for Social Aid and the Protection of Children.	Responsible institutions, partners and contracting authority
7.	Counselling and education for socio-professional integration	Tulcea Municipality City Hall; PHARE funding.	1. Counselling and education office for disabled persons. 2. Counselling and education office for the elderly.	20,000 20,000	12 months 12 months	Tulcea Department for Social Assistance and Protection	General Department for Social Aid and the Protection of Children; Tulcea County Employment Agency; Pensioners' organisations; County pension house; Notary office.	Responsible institutions, partners and contracting authority
8.	Promote volunteer work in social assistance	Tulcea Municipality City Hall; PHARE funding.	« Learn to age gracefully! » - Establishment of a pilot centre to educate youth for life	20,000	12 months	Tulcea Department for Social Assistance and Protection	Tulcea Municipality City Hall; County School Inspectorate.	Responsible institutions, partners and contracting authority
9.	Social protection programmes for target groups	Tulcea Municipality City Hall; PHARE funding.	Centre for the collection and distribution of donations	10,000	6 months	Tulcea Department for Social Assistance and Protection	Tulcea Municipality Local Council, « Noroc » Foundation; « Crescens » As sociation; « Măini Întinse » Association.	Responsible institutions, partners and contracting authority

10	Development of a family environment conducive to child rearing and education, and the promotion of a healthy lifestyle	Tulcea Municipality City Hall; PHARE funding.	1. Centre for the development of qualities necessary for successful parents 2. Teen office-establishment of a pilot centre to promote a healthy lifestyle	20,000 20,000	12 months 12 months	Tulcea Department for Social Assistance and Protection	General Department for Social Aid and the Protection of Children; County School Inspectorate; County Police Inspectorate	Responsible institutions, partners and contracting authority
11	Ensure a family environment for youths who leave the foster placement centres	Tulcea Municipality City Hall; PHARE funding.	1. Counselling centre which offers integrated services for teenagers who leave the foster placement centres	20,000	12 months	Tulcea Department for Social Assistance and Protection	General Department for Social Aid and the Protection of Children; County School Inspectorate; County Police Inspectorate; S.C. « SPONDE O » S.R.L.Tulcea.	

III. PORTFOLIO OF PRIORITY PROJECTS

1. Restoration and Extension of the Water and Sewage Networks in Tulcea Municipality

General Objectives

- Restoration of water sources;
- Restoration of the water treatment plant;
- Laboratory for analyses;
- Restoration of water reservoirs and water pipes;
- Restoration of the sewage network;
- Construction of a new water purification plant.

Specific Objective

- Restoration and extension of the water and sewage networks.

Total Value of the Project

- 242,000,000 ROL

Project Duration

- 24 months.

Short Description

The project is funded through European Union non-reimbursable funds, and aims to improve the water distribution and sewage systems by restoring and extending them.

Results

- Improved water distribution system;
- Improved sewage system;
- Improved water quality;
- Improved urban infrastructure and increased degree of social comfort.

2. Environmental Reconstruction of Lake Ciuperca, Tulcea Municipality

General Objective

- Elimination of uncontrolled floods of rain and household water into Lake Ciuperca;
- Restoration of the rainwater pumping station;
- Restoration of the technological main from the water treatment plant.

Specific Objective

- Restoration and extension of water and sewage systems.

Total Value of the Project

- 17,000,000 ROL

Project Duration

- 24 months

Short Description

During the 18th century, Lake Ciuperca belonged to the flood plain of the Danube, namely at the Tulcea arm.

Currently, this lake's banks are fitted and are connected to the Danube through a pumping station built in the 1970s, near the CFR Rail Station. It was landscaped as a leisure area for the city's inhabitants and for tourists.

According to reports regarding the state of the environment produced by the Environmental Protection Agency, physical and chemical analyses of the lake's water indicate high values of organic and inorganic particles, due to the fact that the water is not circulated and changed sufficiently, as well as spills from the rainwater pipes on the western part, and of some household wastewater pipes.

The degree of contamination and pollution of the lake renders it unsafe as a leisure area.

Results

- Improved system for the release of rain and household wastewater into Lake Ciuperca;
- Improved rain water pumping station;
- Replacement of the technological main from the water treatment plant;
- Pollution clearing and ecological rendering of the lake and of the adjacent area, in order to develop leisure activities to emphasize the natural and cultural heritage of Tulcea Municipality.

3. Restoration and Modernisation of the EAST Industrial Area in Tulcea Municipality

General Objective

- Restoration of the access road to the EAST industrial area;
- Improvement of the wastewater sewage network;
- Restoration of water distribution networks;
- Restoration of electrical and public lighting networks.

Specific Objective

- Restoration and modernisation of the EAST industrial area.

Total Value of the Project

- 33,000,000 ROL

Project Duration

- 24 months

Short Description

The eastern part of Tulcea Municipality is an area with a strong economic potential in view of economic development. In this area, there are important industrial objectives, such as the Campofrio Company which processes meat, the SC Deltalact which produces milk products,

the County Department of roads and bridges, a large auto park, SC Textile Gelco, which produces textiles, as well as auto repair shops and boat construction shops.

There is also a potential for the establishment of new industrial investments.

The problem with this area is its poor access to the city, as the only access road is currently Orizontului Street. The city's belt road is impractical because of deteriorated pavement, and due to the defective sewage and rainwater release systems, as well as defective existing water distribution systems.

Results

- Improved water distribution system;
- Improved sewage system;
- Improved electrical and public lighting networks;
- Improved urban infrastructure and an increase in the degree of social comfort.

4. Day Centre for the Elderly

Responsible for the project

Tulcea Department for Social Assistance and Protection

Partners:

Tulcea Municipality Local Council, County Council for the Elderly, County Pensioners' Union.

The scope of the day centre is to prevent social marginalisation and to support social reintegration, and improve the quality of life of the elderly by providing a pleasant and active way to pass the time.

Direct beneficiaries:

The more than 11,000 pensioners in Tulcea Municipality.

Location of completed project:

The building is currently managed by DAPS, and located at 17Mahmudiei Street, Tulcea.

19. Kinesiotherapy;

20. Offer primary medical assistance;

21. Legal counselling.

Project description:

The establishment and organisation of a day centre for the elderly, with a capacity for the participation of up to 30 elderly persons, which means daily access of 60 elderly persons.

Services offered within the project:

1. Psychological counselling;

2. Social counselling;

3. Legal counselling;

4. Kinesiotherapy;

5. Socialisation and leisure time;

6. Moral and emotional support.

Management and proper equipment for the building, in order to be able to carry out the following activities:

1. Provide information regarding the rights afforded by the current law;
2. Organise excursions, visits, distractive activities, and social games;
3. Organise cultural and artistic activities with the occasion of various national or religious celebrations;
4. Organise birthday parties for members;
5. Offer social support in case of illness through residential or hospital visits;
6. Contact with the families of members, and mediation of potential conflicts
7. Accompany those who attend the day centre to resolve administrative issues;
8. Collaborate with different non-governmental organisations, health or religious entities, and educational organisations in order to find solutions to some of the problems faced by the centre's beneficiaries;
9. Practical activities (arts and crafts, making different ornamental objects: cards, charms, etc.);
10. Offer individual and group counselling;
11. Occupational therapy;
12. Mini-plays for children;
13. Occupational therapy and creativity: epigrams, poems;
14. Mental training activities (psychological tests, memory tests);
15. Social therapy: to value the individual in a group;
16. Art therapy: colour creations, plays;
17. Music therapy;
18. Provide an inter-relation group;

Social impact: An increase in life expectancy for the elderly.

Funding: Tulcea Municipality Local Council, PHARE funding, contributions from benefactors, donations, sponsorships.

Estimated project value: 50,000 EUR

The project will be completed in one 6-month phase.

The project will be implemented over 3 years.

5. Centre for the Prevention and Control of Domestic Violence

Responsible for the project:

Tulcea Department for Social Assistance and Protection

Partners:

Tulcea Municipality Local Council, Tulcea Municipality City Hall, « Noroc » Foundation, General Department for Social Assistance and Protection of Children.

The scope of the centre is to support victims through programmes for rehabilitation and social re-insertion. Direct beneficiaries: victims of domestic violence in Tulcea Municipality.

Location of completed project: Building located at 50 Taberei Street, Tulcea.

Project description:

The shelter offers accommodation for 5 families (women and their children), with each client to have a separate space for

herself and her children, where they can live their day-to-day life. The length of their stay in the shelter is temporary, over a period between 3-6 months. This will depend on the needs of the clients, taking into consideration their individual situation. Their physical condition is taken into account, as is the danger of the aggressor, financial situation, and the opportunity to find a living place. To date, 35 women and 39 children have benefited from the specialised care offered by our shelter.

Social impact:

Necessary physical safety, support, quiet, and confidentiality. Here, victims can for once live without fear or be afraid of embarrassment. Victims meet with other women with similar experiences, where they can begin to fight their feelings of isolation and shame.

Funding:

Tulcea Municipality Local Council, PHARE funding, contributions from benefactors, donations, sponsorships.

Estimated project value:
80,000 EUR

The project will be completed in one 12-month phase.
The project will be implemented over a 3-year period.

6. Centre for the Collection and Distribution of Donations

Responsible for the project:

Tulcea Department for Social Assistance and Protection

Partners:

Tulcea Municipality Local Council,
« Noroc » Foundation,
« Crescens » Association, « Măini Întinse »
Association.

The scope of the centre is to reduce poverty, and increase life quality.

Direct beneficiaries:

Persons with small or no income in Tulcea Municipality.

Location of completed project:

Building located at 50 Taberei Street, Tulcea.

Project description:

The centre's activity will be the collection of donations and sponsorships made by individual persons, and their distribution based on need and social surveys carried out by DAPS, to beneficiaries.

Social impact: Improved quality of life and decreased crime rates.

Funding:

Tulcea Municipality Local Council, PHARE funding, contributions from benefactors, donations and sponsorships.

Estimated project value:
10,000 EUR

The project will be completed in one 6-month phase.
The project will be implemented over a 3-year period